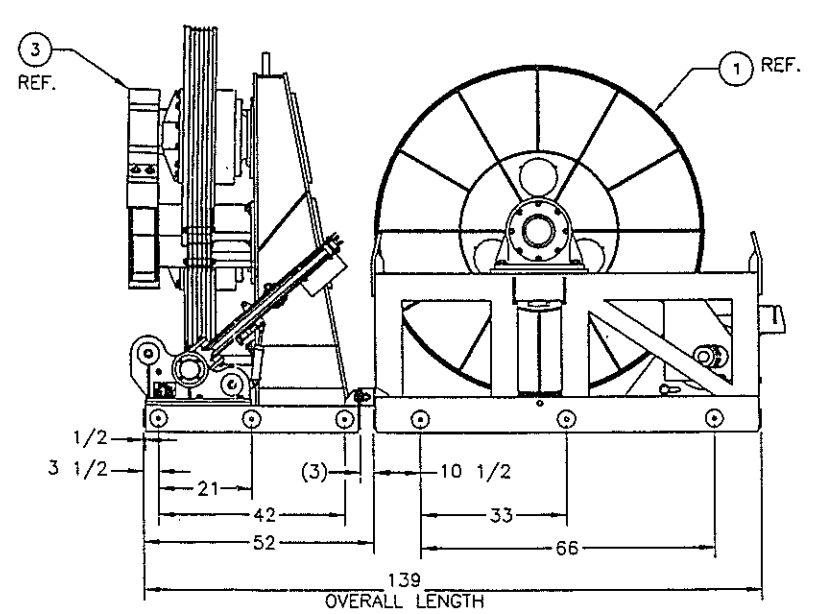
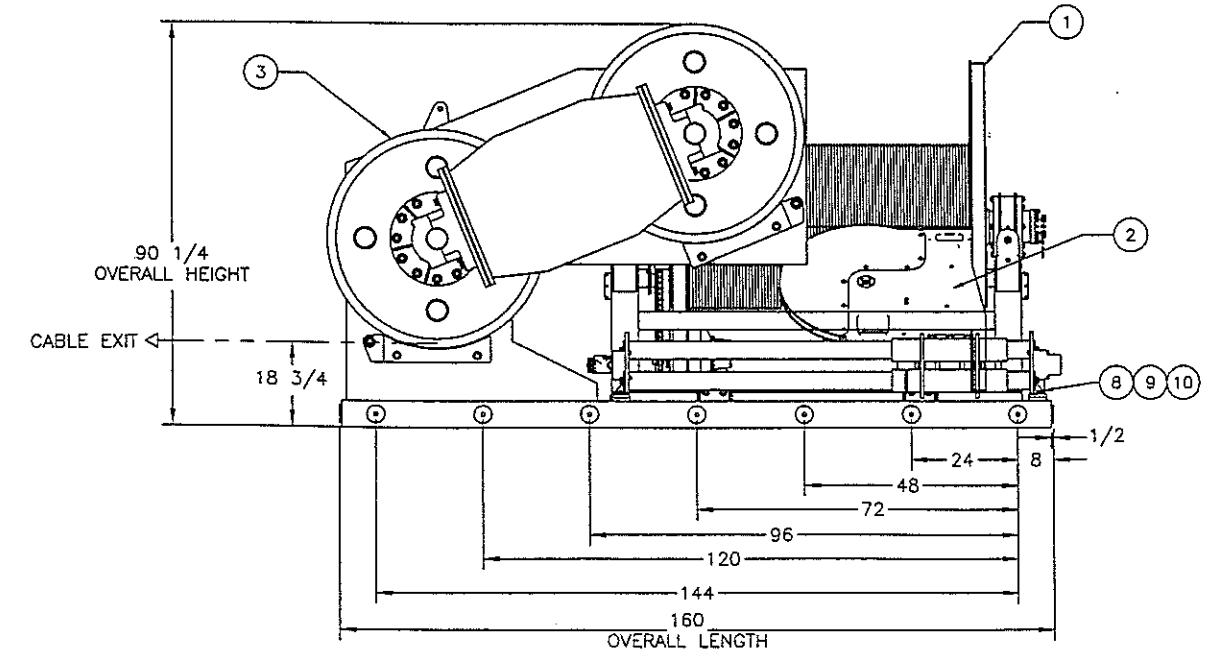
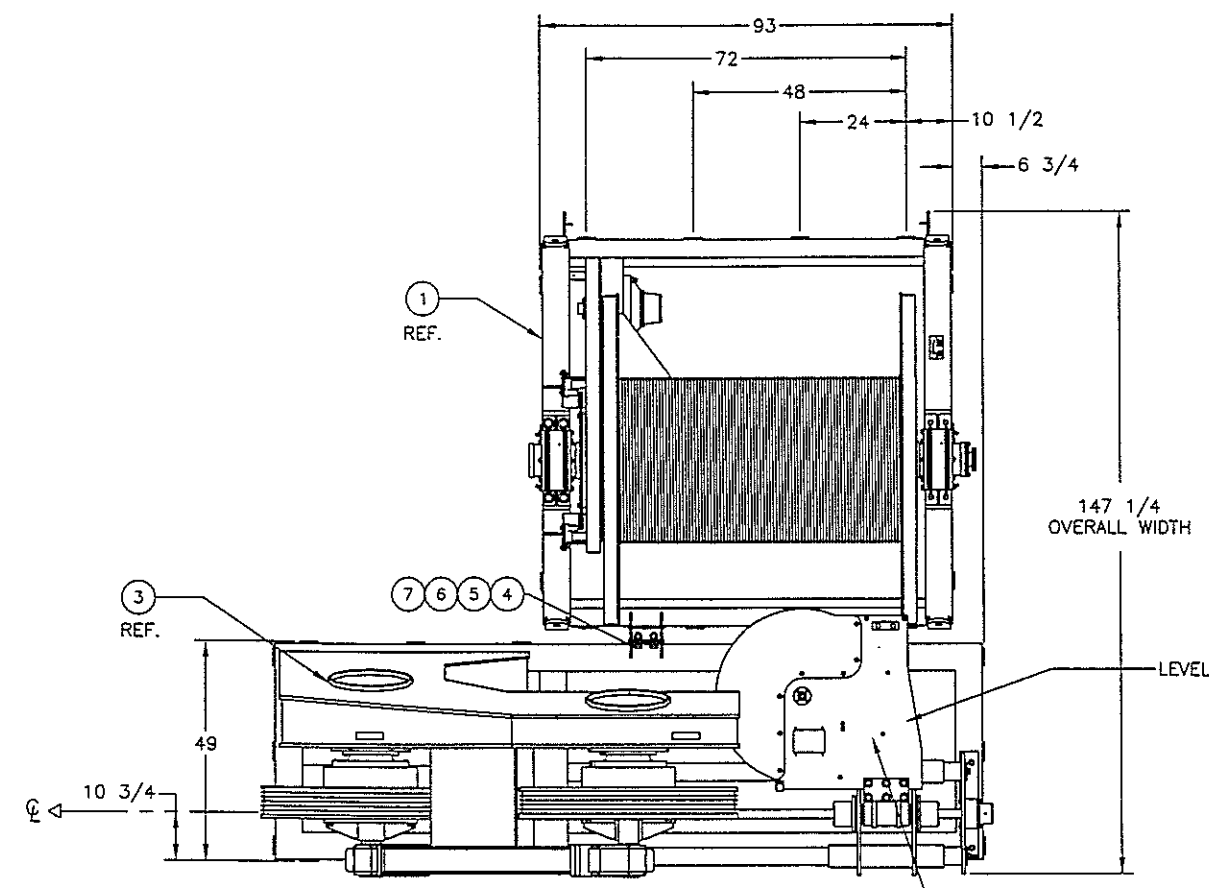


REVISION HISTORY				
ZONE	REV	DESCRIPTION	DATE	APPROVED
-	A	REVISED AND ADDED DIMS	04OCT00	<i>[Signature]</i>



QTY REQD	PART NUMBER	DESCRIPTION	MATERIAL SPECIFICATION	STD. NO.
6		FLAT WASHER, NARROW #3/4	ZINC COATED Gr. 5 STEEL	10
6		LOCK WASHER #3/4, HELICAL SPRING	ZINC COATED Gr. 5 STEEL	9
6		HEX HEAD SCREW 3/4-10 UNC x 1 3/4 Lg.	ZINC COATED Gr. 5 STEEL	8
8		FLAT WASHER, NARROW #1	ZINC COATED Gr. 5 STEEL	7
8		LOCK WASHER #1, HELICAL SPRING	ZINC COATED Gr. 5 STEEL	6
4		HEX NUT, PLAIN 1-8 UNC	ZINC COATED Gr. 5 STEEL	5
4		HEX HEAD SCREW 1-8 UNC X 3 Lg.	ZINC COATED Gr. 5 STEEL	4
1	461-4001-01	TRACTION WINCH		3
1	461-2001-02	LEVELWIND		2
1	414-1001-02	STORAGE WINCH		1

UNLESS OTHERWISE SPECIFIED: DIMENSIONS ARE IN INCHES. TOLERANCES ARE: FRACTIONS DECIMALS ANGLES ± 1/16 .XX ± .02 ± 1/2° .XXX ± .005

REMOVE BURRS, BREAK SHARP EDGES. MATERIAL: SEE PARTS LIST. FINISH: 125 ✓ APPROX. WEIGHT, LBS: 28350

DO NOT SCALE DRAWING

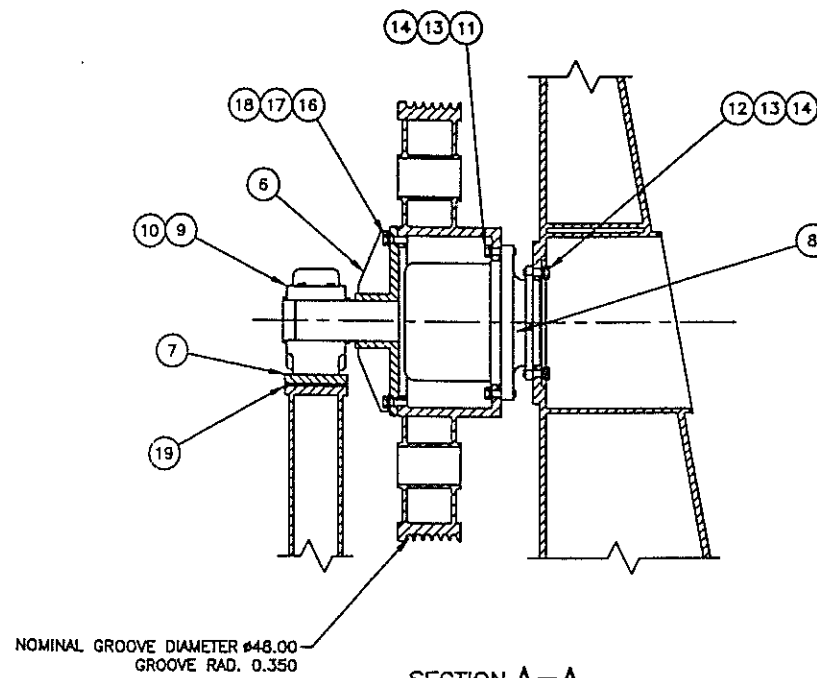
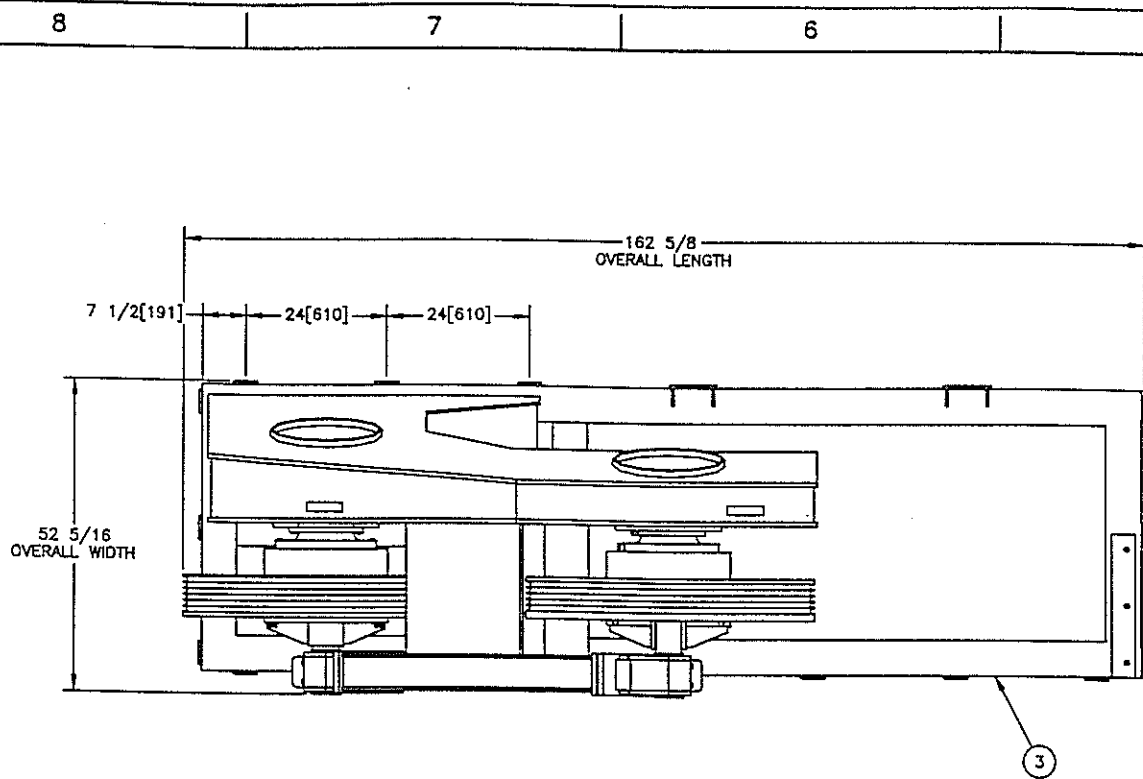
CUSTOMER P.O. No. DYNACON 664	JOB No.	DATE	APPROVALS
			DRAWN: DNS 27SEP00
			DRAFTING CHECK: AL 28SEP00
			ENGINEERING CHECK: PRC 28SEP00
			ENGINEERING APPROVAL: TS 28SEP00
			PRODUCTION APPROVAL: DJ 28SEP00

THIS DRAWING IS THE PROPERTY OF **D** DYNACON, INC. 831 INDUSTRIAL BLVD. BRYAN, TEXAS USA 77803. ANY REPRODUCTION OR USE OF THIS DESIGN IS EXPRESSLY FORBIDDEN UNLESS AUTHORIZED IN WRITING.

**STORAGE/TRACTION WINCH GENERAL ASSEMBLY**

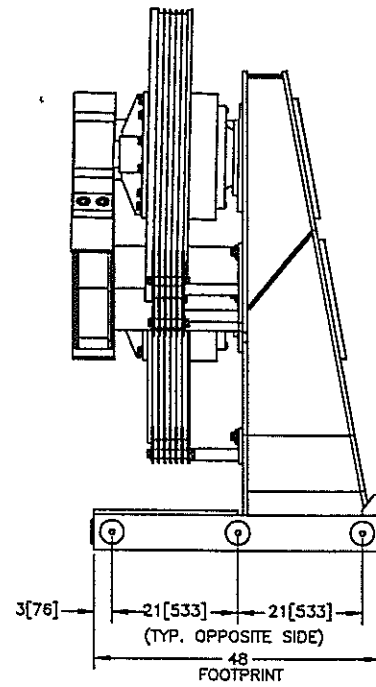
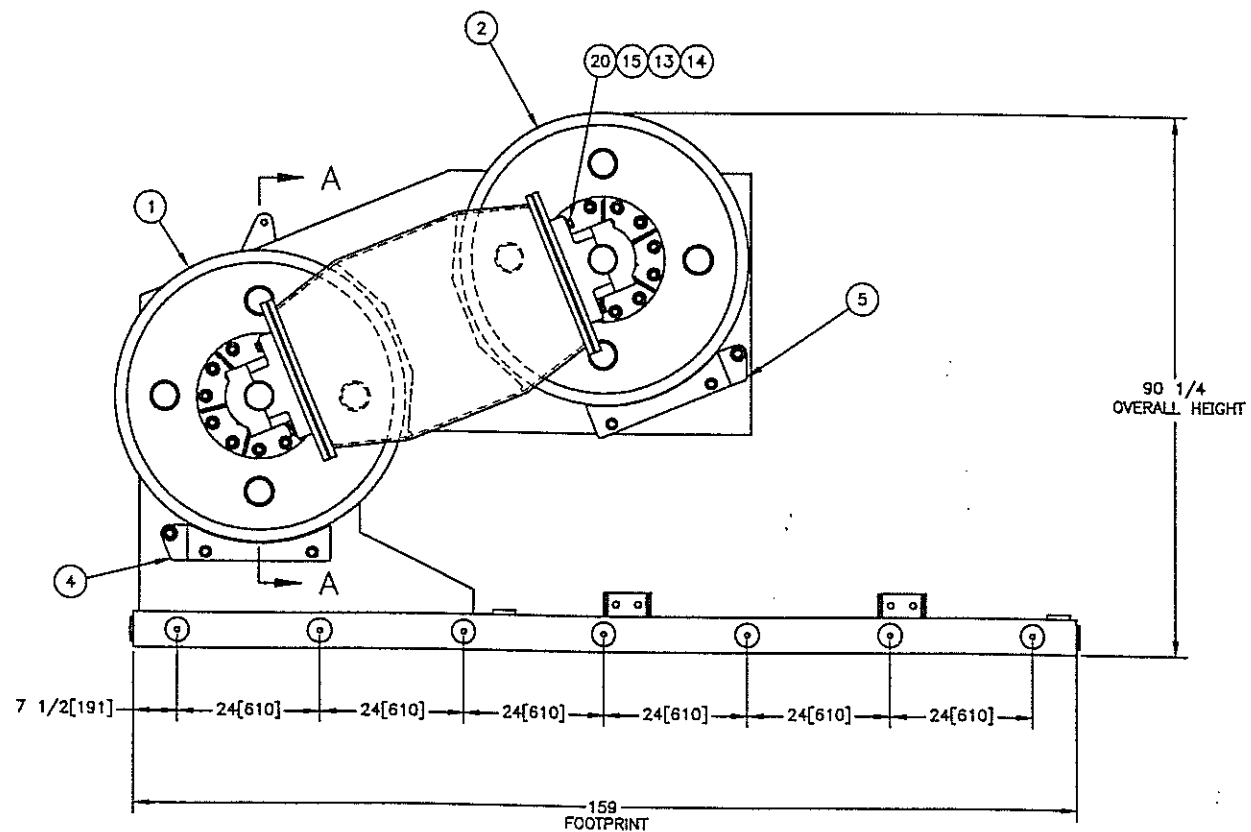
SIZE: D	CAGE CODE: OFSDO	DWG. NO.: 664-1001-01	REV: A
SCALE: 1/20	PATH J:\664\664100101	SHEET 1 OF 1	

04OCT00 9:03



NOTE:  
DESIGNED TO BE SHIPPED IN  
8 1/2 FT. x 20 FT. OPEN TOP  
ISO SHIPPING CONTAINER.  
LOAD ASSEMBLY INTO SHIPPING  
CONTAINER FROM TOP.

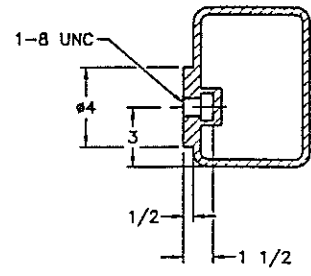
SECTION A-A  
SCALE: 1/10  
TYP. 2 PALCES



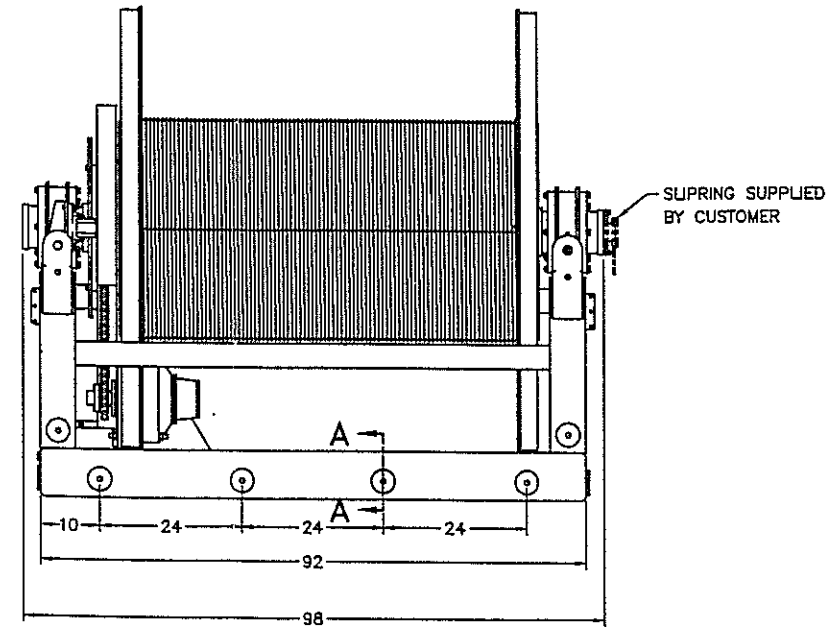
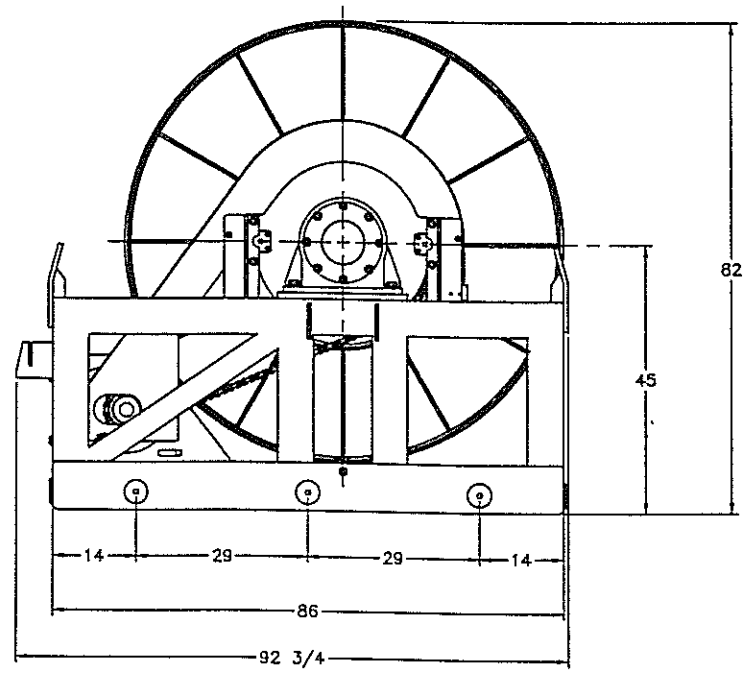
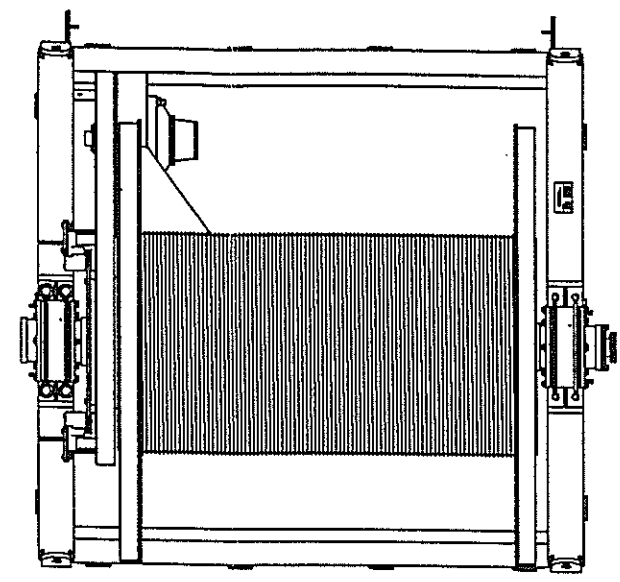
QTY	RECD	PART NUMBER	DESCRIPTION	MATERIAL SPECIFICATION	ITEM NO.
2		441-4005-08	BEARING BOLTING BAR		20
AR		DYN	POURABLE CHOCKING COMPOUND	CHOCKFAST	19
24			FLAT WASHER #3/4	18-8 STAINLESS STEEL	18
24			LOCK WASHER, #3/4, HELICAL SPRING	18-8 STAINLESS STEEL	17
24		DYN	HEX HEAD SCREW 3/4-10 UNC x 2 1/4 Lg.	ZINC COATED Gr. 5 STEEL	16
8			HEX HEAD SCREW 7/8-9 UNC x 5 1/2 Lg.	ZINC COATED Gr. 5 STEEL	15
88			FLAT WASHER, NARROW #7/8	18-8 STAINLESS STEEL	14
88			LOCK WASHER #7/8, HELICAL SPRING	18-8 STAINLESS STEEL	13
40			HEX HEAD SCREW, DIN 933 M20 x 1.5 x 80 Lg.	ZINC COATED Gr. 5 STEEL GR 8.8 METRIC	12
40			HEX HEAD SCREW, DIN 933 M20 x 1.5 x 75 Lg.	ZINC COATED Gr. 5 STEEL GR 8.8 METRIC	11
2		042EC	BEARING END COVER	DODGE	10
2		042271	PILLOW BLOCK BEARING TYPE SAF-XT 22526	DODGE	9
2		F-44	GEARBOX 147.8:1/MOTOR 47cc. (SEE 461-8009-01, TAG MG-1, MG-2)	O & K	8
2		461-4007-13	BEARING DOUBLER PLATE		7
2		DYN-4004-01	STUB SHAFT		6
1		461-4007-62	LOW TENSION CABLE GUIDE ASSEMBLY		5
1		461-4007-61	HIGH TENSION CABLE GUIDE ASSEMBLY		4
1		461-4007-01	TRACTION WINCH FRAME		3
1		461-4003-03	LOW TENSION SHEAVE		2
1		461-4003-02	HIGH TENSION SHEAVE		1

UNLESS OTHERWISE SPECIFIED: DIMENSIONS ARE IN INCHES. TOLERANCES ARE: FRACTIONS ± 1/16 DECIMALS .XX ± .02 ANGLES ± 1/2° .XXX ± .005		CUSTOMER P.O. No. DYNACON JOB No. 461	THIS DRAWING IS THE PROPERTY OF DYNACON, INC. 831 INDUSTRIAL BLVD. BRYAN, TEXAS USA 77803. ANY REPRODUCTION OR USE OF THIS DESIGN IS EXPRESSLY FORBIDDEN UNLESS AUTHORIZED IN WRITING.
APPROVALS	DATE	DRAWN	J.L.L. 12/12/98
REMOVE BURRS, BREAK SHARP EDGES.	DRAFTING CHECK	ENGINEERING CHECK	
MATERIAL SEE PARTS LIST	ENGINEERING APPROVAL	PRODUCTION APPROVAL	
461-0001-01 1	FRESH	APPROX. WEIGHT, LBS	11,000
NEXT ASSEMBLY	QUANTITY	SCALE	1/15
APPLICATION	DO NOT SCALE DRAWING	SIZE	D OFSDO
		DWG NO.	461-4001-01
		SCALE	1/15
		DATE	12/19/98 13:40
		SHEET	1 OF 1

REVISIONS				
ZONE	REV	DESCRIPTION	DATE	APPROVED
	A	AS BUILT	08/11/95	JPL
	B	UPDATED SPECIFICATIONS	11/10/95	



SECTION A--A  
SCALE: NONE  
TYP. 14 PLACES



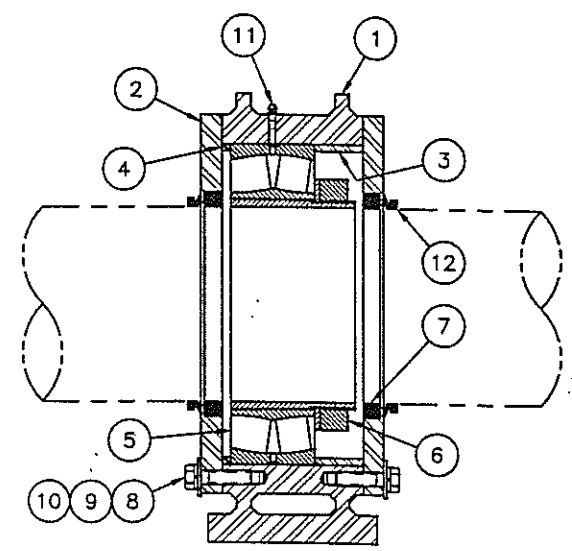
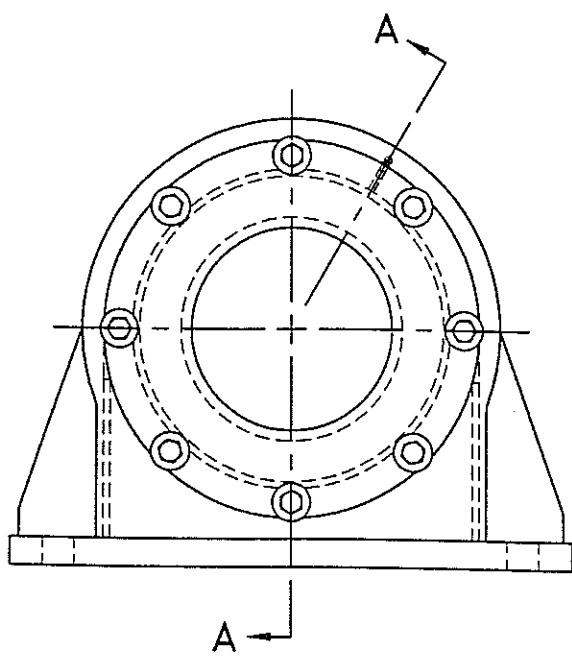
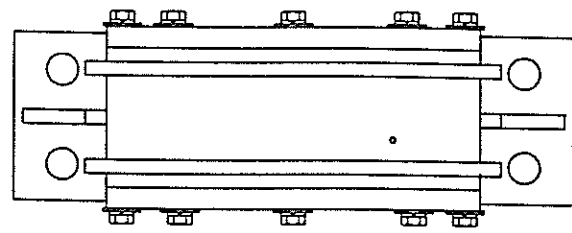
SPECIFICATIONS:

LINE TENSION	2500 lb
ROTATIONAL SPEED	35 RPM
WEIGHT (EMPTY)	8200 lb
CABLE DIAMETER	0.68 in
WRAPS/LAYER	90
No. OF LAYERS	30
CABLE WEIGHT	17,300 lb

UNLESS OTHERWISE SPECIFIED: DIMENSIONS ARE IN INCHES. TOLERANCES ARE:		CUSTOMER P.O. No. DYNACON JOB No. 414	THIS DRAWING IS THE PROPERTY OF <b>D</b> DYNACON, INC. ANY REPRODUCTION OR USE OF THIS DESIGN IS EXPRESSLY FORBIDDEN UNLESS AUTHORIZED IN WRITING.	
FRACTIONS ± 1/16	DECIMALS XXX ± .02	APPROVALS	DATE	
ANGLES ± 1/2°	XXX ± .005	DRAWN	ALN	08/07/95
REMOVE BURRS, BREAK SHARP EDGES.		DRAFTING CHECK	DRB	08/15/95
MATERIAL		ENGINEERING CHECK	JHD	08/20/95
FINISH 125 ✓	ACTUAL WEIGHT, LBS SEE TABLE	ENGINEERING APPROVAL	CLB	08/19/95
DO NOT SCALE DRAWING		PRODUCTION APPROVAL	DJ	08/20/95
SIZE D	CAGE CODE OFSDO	DWG NO. 414-1001-01	REV B	
SCALE 1/15	PATH J:\41410101		SHEET 1 OF 1	
11/10/95 14:30				



REVISIONS				
ZONE	REV	DESCRIPTION	DATE	APPROVED
C2	A	ADDED ITEM 12, DELETED NOTE	07/07/95	



SECTION A-A  
SCALE: 1/4

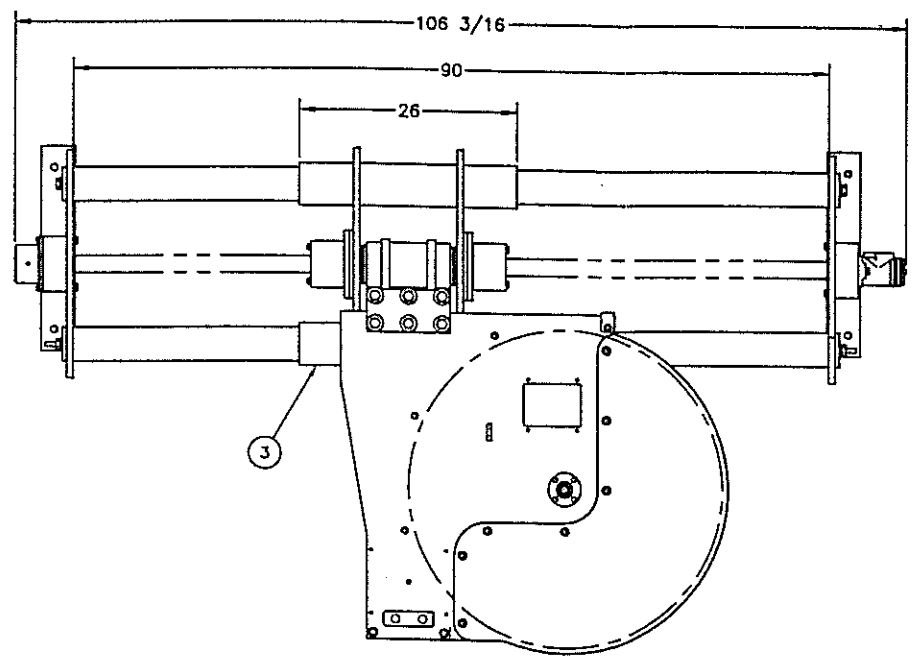
QTY	CAGE CODE	PART OR IDENTIFYING NO.	NOMENCLATURE OR DESCRIPTION	MATERIAL SPECIFICATION	ITEM NO.
2		401800	V-RING SEAL 6 15/16 SHAFT	FORSHEDA	12
1			GREASE ZERK 1/4-28 UNF	STAINLESS STEEL	11
16			LOCK WASHER #1/2, HELICAL SPRING	18-8 STAINLESS STEEL	10
16			FLAT WASHER #1/2	18-8 STAINLESS STEEL	9
16			HEX HEAD SCREW 1/2-13 UNC x 2	18-8 STAINLESS STEEL	8
2	9540 LUP		SEAL 6 15/16 SHAFT	J-M	7
1	SNW 3038		BEARING ADAPTER	SKF	6
1	23038 CCK		SPHERICAL ROLLER BEARING	SKF	5
1	414-1005-08		INBOARD BEARING RETAINER		4
1	414-1005-07		OUTBOARD BEARING RETAINER		3
2	414-1005-06		SEAL PLATE		2
1	414-1005-05		BEARING HOUSING		1

UNLESS OTHERWISE SPECIFIED: DIMENSIONS ARE IN INCHES		CUSTOMER P.O. NO. DYNACON 414		THIS DRAWING IS THE PROPERTY OF DYNACON, INC.	
TOLERANCES ARE:		JOB NO.		831 INDUSTRIAL BLDG. BRYAN, TEXAS USA 77803	
FRACTIONS	DECIMALS	APPROVALS	DATE	ANY REPRODUCTION OR USE OF THIS DESIGN IS EXPRESSLY FORBIDDEN UNLESS AUTHORIZED BY WRITING.	
±1/16	.XX ±.02	DRW	05/19/95	STORAGE WINCH BEARING ASSEMBLY	
REMOVE BURRS, BREAK SHARP EDGES.	ANGLES ±1/2"	DRAFTING CHECK	05/30/95	SIZE	CAGE CODE
MATERIAL	SEE PARTS LIST	ENGINEERING CHECK	05/26/95	C	OFSDO
FINISH	125/	ENGINEERING APPROVAL	05/26/95	DWG NO.	414-1005-01
NEXT ASSEMBLY	QUANTITY	PRODUCTION APPROVAL	05/26/95	SCALE	1/4
APPLICATION	DO NOT SCALE DRAWING			FILE J:\414\41410501	SHEET 1 OF 1

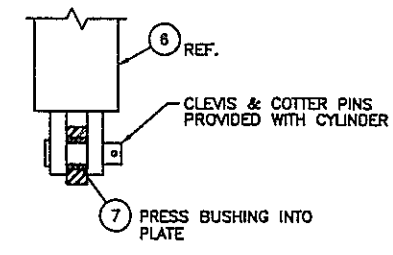
07/07/95 14:45

REVISIONS			
ZONE	REV	DESCRIPTION	DATE
-	A	AS BUILT	04/03/97

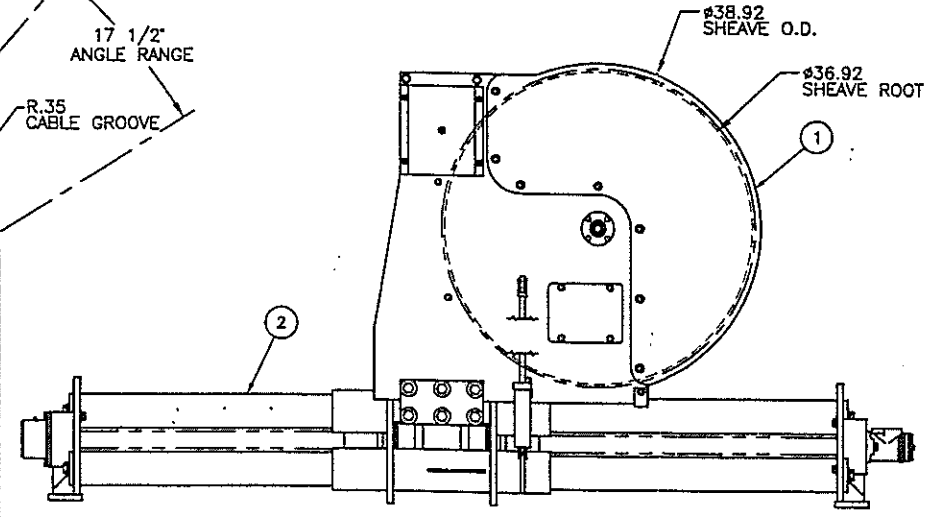
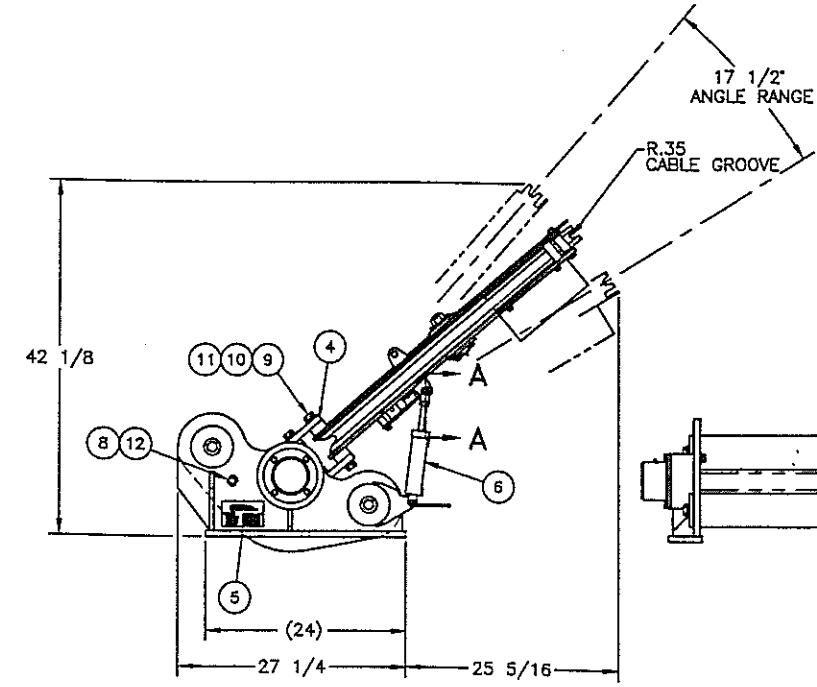
IDENTIFICATION TAG DATA	
MODEL NUMBER	461
SERIAL NUMBER	461101LW
DATE OF MANUFACTURE	
EMPTY WEIGHT	
GROSS WEIGHT	1550lb
CERTIFICATION	N/A



(SHEAVE SHOWN IN HORIZONTAL POSITION)



SECTION A-A  
SCALE: 1/2  
TYP. EACH END OF CYLINDER



(SHEAVE SHOWN IN VERTICAL POSITION)

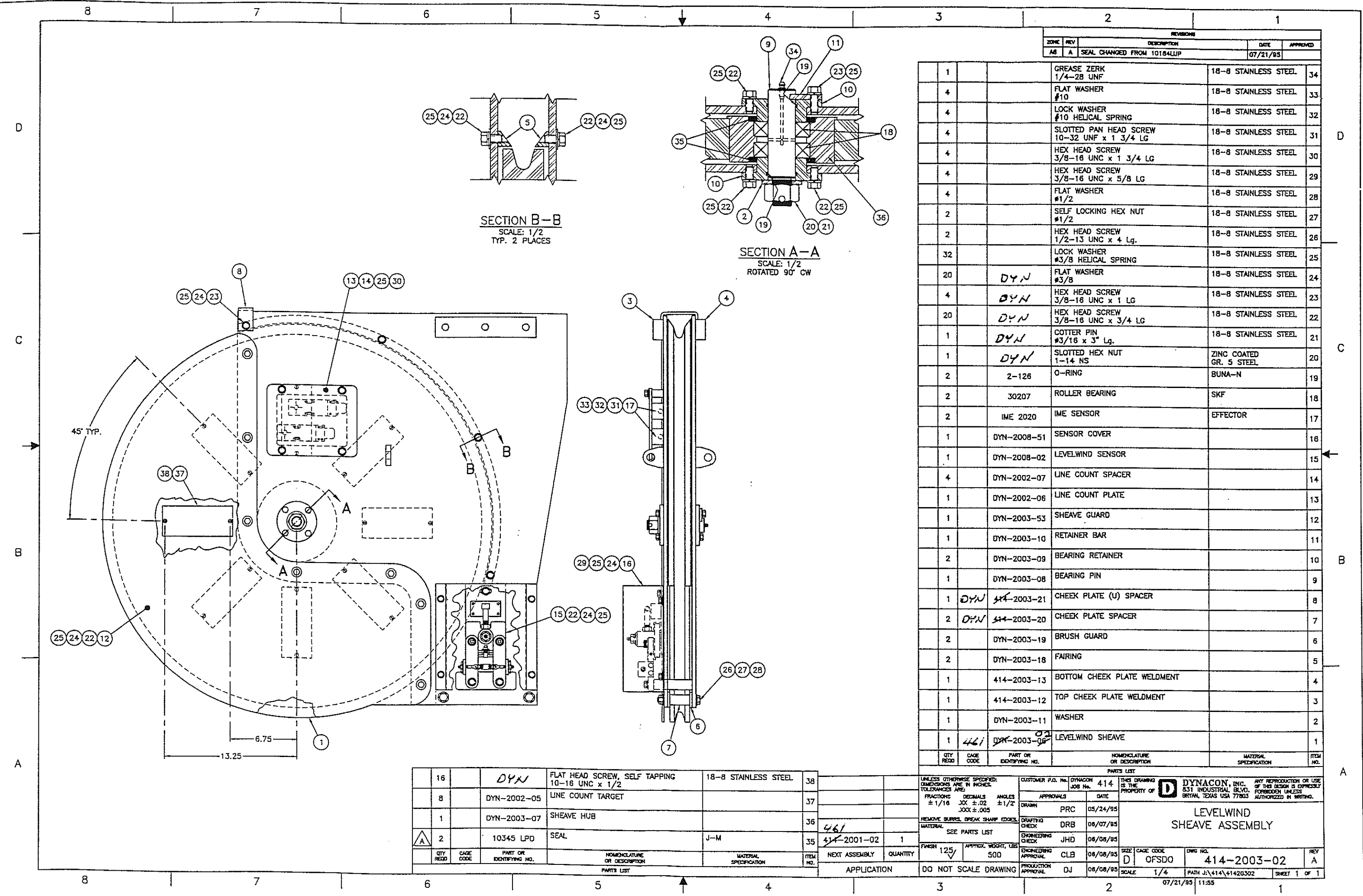
QTY REQD	PART NUMBER	DESCRIPTION	MATERIAL SPECIFICATION	ITEM NO.
4		SOCKET HEAD SET SCREW, CUP POINT 1/4-20 UNC x 1/4 Lg.	18-8 STAINLESS STEEL	12
12		LOCK WASHER #3/4, HELICAL SPRING	18-8 STAINLESS STEEL	11
12		FLAT WASHER #3/4	18-8 STAINLESS STEEL	10
12		HEX HEAD SCREW 3/4-10 UNC x 2 Lg.	18-8 STAINLESS STEEL	9
2		ROUND ROD #3/4 x 10 1/2 Lg.	AISI TYPE 304L STAINLESS STEEL	8
2	SS-1624-8	CYLINDER BUSHING	SYMCO	7
1	BM1504	HYDRAULIC CYLINDER (SEE 461-8001-01, TAG CYL-1)	CENTRAL	6
1	DYN-9002-99	IDENTIFICATION TAG ENGRAVE PER DATA THIS SHEET		5
2	461-2003-15	CONNECTION PLATE		4
1	461-2006-02	CARRIAGE ASSEMBLY		3
1	461-2005-02	DRIVE ASSEMBLY		2
1	414-2003-02	SHEAVE ASSEMBLY		1

UNLESS OTHERWISE SPECIFIED: DIMENSIONS ARE IN INCHES. TOLERANCES ARE:		CUSTOMER P.O. No. DYNACON 461		THIS DRAWING IS THE PROPERTY OF DYNACON, INC. ANY REPRODUCTION OR USE OF THIS DESIGN IS EXPRESSLY FORBIDDEN UNLESS AUTHORIZED IN WRITING.	
FRACTIONS	DECIMALS	ANGLES	APPROVALS	DATE	
± 1/16	± .02	± 1/2°	DRAWN JLL	12/05/96	
	JOK ± .005		DRAFTING CHECK AL	12/18/96	
REMOVE BURRS, BREAK SHARP EDGES.			ENGINEERING CHECK WHB	12/18/96	
MATERIAL SEE PARTS LIST			ENGINEERING APPROVAL BDB	12/18/96	
461-1001-01	1	FINISH 125/	APPROVAL WEIGHT, LBS	1550	
NEXT ASSEMBLY	QUANTITY	APPLICATION	DO NOT SCALE DRAWING	PRODUCTION APPROVAL DJJ	12/18/96

**LEVELWIND GENERAL ASSEMBLY**

SIZE	D	CAGE CODE	OFS00	DWG NO.	461-2001-02	REV	A
SCALE	1/10	PATR	J461\46120102	SHEET	1 OF 1		

04/03/97 10:43



REVISIONS				
ZONE	REV	DESCRIPTION	DATE	APPROVED
AS	A	SEAL CHANGED FROM 10184LLP	07/21/93	

QTY REQD	CAGE CODE	PART OR IDENTIFYING NO.	NOMENCLATURE OR DESCRIPTION	MATERIAL SPECIFICATION	ITEM NO.
1			GREASE ZERK 1/4-28 UNF	18-8 STAINLESS STEEL	34
4			FLAT WASHER #10	18-8 STAINLESS STEEL	33
4			LOCK WASHER #10 HELICAL SPRING	18-8 STAINLESS STEEL	32
4			SLOTTED PAN HEAD SCREW 10-32 UNF x 1 3/4 LG	18-8 STAINLESS STEEL	31
4			HEX HEAD SCREW 3/8-16 UNC x 1 3/4 LG	18-8 STAINLESS STEEL	30
4			HEX HEAD SCREW 3/8-16 UNC x 5/8 LG	18-8 STAINLESS STEEL	29
4			FLAT WASHER #1/2	18-8 STAINLESS STEEL	28
2			SELF LOCKING HEX NUT #1/2	18-8 STAINLESS STEEL	27
2			HEX HEAD SCREW 1/2-13 UNC x 4 Lg.	18-8 STAINLESS STEEL	26
32			LOCK WASHER #3/8 HELICAL SPRING	18-8 STAINLESS STEEL	25
20	DYN		FLAT WASHER #3/8	18-8 STAINLESS STEEL	24
4	DYN		HEX HEAD SCREW 3/8-16 UNC x 1 LG	18-8 STAINLESS STEEL	23
20	DYN		HEX HEAD SCREW 3/8-16 UNC x 3/4 LG	18-8 STAINLESS STEEL	22
1	DYN		COTTER PIN #3/16 x 3" Lg.	18-8 STAINLESS STEEL	21
1	DYN		SLOTTED HEX NUT 1-14 NS	ZINC COATED GR. 5 STEEL	20
2		2-126	O-RING	BUNA-N	19
2		30207	ROLLER BEARING	SKF	18
2		IME 2020	IME SENSOR	EFFECTOR	17
1		DYN-2008-51	SENSOR COVER		16
1		DYN-2008-02	LEVELWIND SENSOR		15
4		DYN-2002-07	LINE COUNT SPACER		14
1		DYN-2002-06	LINE COUNT PLATE		13
1		DYN-2003-53	SHEAVE GUARD		12
1		DYN-2003-10	RETAINER BAR		11
2		DYN-2003-09	BEARING RETAINER		10
1		DYN-2003-08	BEARING PIN		9
1	DYN	44-2003-21	CHEEK PLATE (U) SPACER		8
2	DYN	44-2003-20	CHEEK PLATE SPACER		7
2		DYN-2003-19	BRUSH GUARD		6
2		DYN-2003-18	FAIRING		5
1		414-2003-13	BOTTOM CHEEK PLATE WELDMENT		4
1		414-2003-12	TOP CHEEK PLATE WELDMENT		3
1		DYN-2003-11	WASHER		2
1	441	DYN-2003-06	LEVELWIND SHEAVE		1

QTY REQD	CAGE CODE	PART OR IDENTIFYING NO.	NOMENCLATURE OR DESCRIPTION	MATERIAL SPECIFICATION	ITEM NO.
16		DYN	FLAT HEAD SCREW, SELF TAPPING 10-16 UNC x 1/2	18-8 STAINLESS STEEL	38
8		DYN-2002-05	LINE COUNT TARGET		37
1		DYN-2003-07	SHEAVE HUB		36
2		10345 LPD	SEAL	J-M	35

UNLESS OTHERWISE SPECIFIED: DIMENSIONS ARE IN INCHES. TOLERANCES ARE: FRACTIONS .XX ± .02 ANGLES ± 1/2° DECIMALS .XXX ± .005 REMOVE BURRS, BREAK SHARP EDGES. MATERIAL: SEE PARTS LIST FINISH 125V APPROX. WEIGHT, LBS 500

CUSTOMER P.O. No. DYNACON JOB No. 414

APPROVALS: PRC 05/24/95, DRB 08/07/95, JHD 08/08/95, CLB 08/08/95, DJ 08/08/95

DRAFTING CHECK, ENGINEERING CHECK, ENGINEERING APPROVAL, PRODUCTION APPROVAL

THIS DRAWING IS THE PROPERTY OF DYNACON, INC. ANY REPRODUCTION OR USE OF THIS DESIGN IS EXPRESSLY FORBIDDEN UNLESS AUTHORIZED IN WRITING.

831 INDUSTRIAL BLVD. BRYAN, TEXAS USA 77803

**LEVELWIND SHEAVE ASSEMBLY**

SIZE D CAGE CODE OFSDO DWG NO. 414-2003-02 REV A

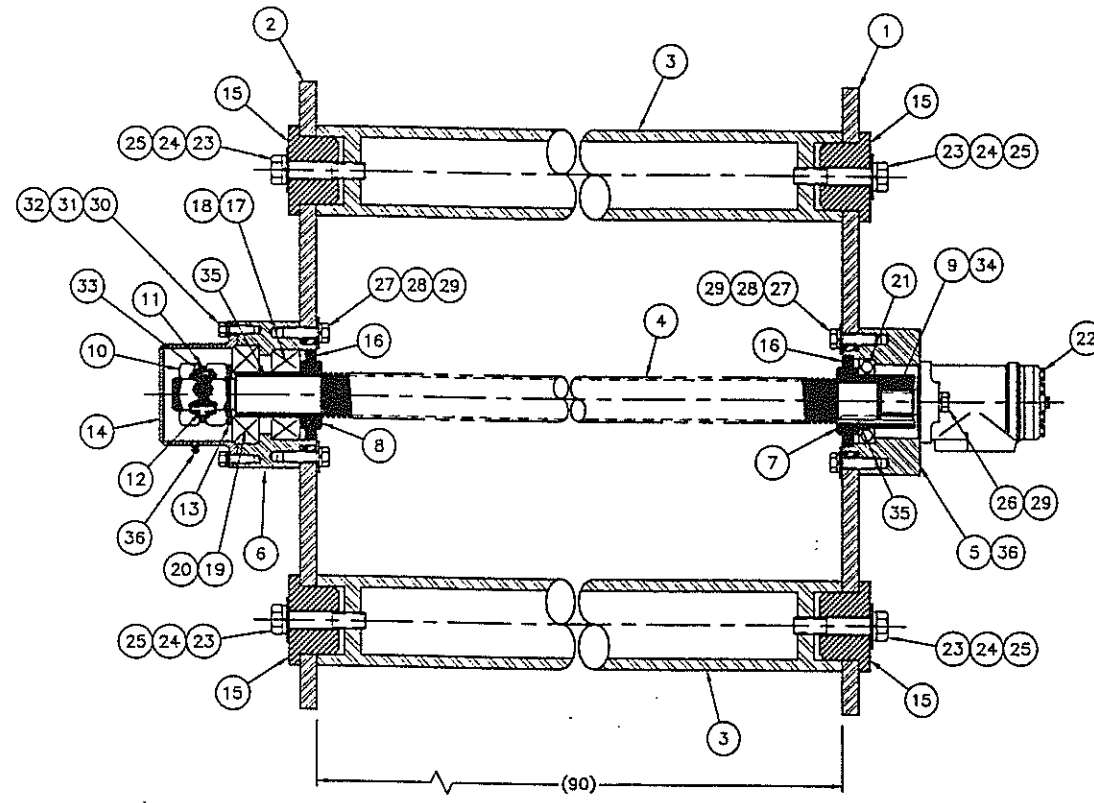
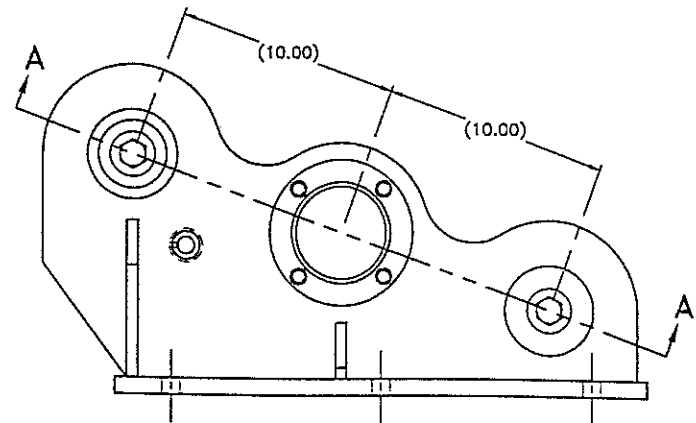
SCALE 1/4 PATH J:\414\41420302 SHEET 1 OF 1

DATE 07/21/95 11:55

QTY REQD	CAGE CODE	PART OR IDENTIFYING NO.	NOMENCLATURE OR DESCRIPTION	MATERIAL SPECIFICATION	ITEM NO.
1		44-2001-02			1

QTY REQD	CAGE CODE	PART OR IDENTIFYING NO.	NOMENCLATURE OR DESCRIPTION	MATERIAL SPECIFICATION	ITEM NO.
1		44-2001-02			1

8 7 6 5 4 3 2 1



SECTION A-A  
SCALE: 1/4

QTY REQD	PART NUMBER	DESCRIPTION	MATERIAL SPECIFICATION	ITEM NO.
1	DYN	ROLL PIN #2/16 x 1 LG	STAINLESS STEEL	33
4		LOCK WASHER #3/8, HELICAL SPRING	STAINLESS STEEL	32
4		FLAT WASHER #3/8 SAE	STAINLESS STEEL	31
4		HEX HEAD CAP SCREW 3/8-16 UNC x 1 1/4 LG	STAINLESS STEEL	30
10		LOCK WASHER #1/2 HELICAL SPRING	STAINLESS STEEL	29
8		FLAT WASHER #1/2 SAE	STAINLESS STEEL	28
8		HEX HEAD SCREW 1/2-13 UNC x 1 3/4	STAINLESS STEEL	27
2		HEX HEAD SCREW 1/2-13 UNC x 2	STAINLESS STEEL	26
4		LOCK WASHER #3/4 HELICAL SPRING	STAINLESS STEEL	25
4		FLAT WASHER #3/4 SAE	STAINLESS STEEL	24
4	DYN	HEX HEAD SCREW 3/4-10 UNC x 3 3/4 LG	ZINC COATED Gr. 5 CARBON STEEL	23
1	DH-100	HYDRAULIC MOTOR (SEE DWG. 414-8009-01, TAG HM-4)	DANFOSS	22
1	6012	BALL BEARING	SKF	21
1	55200C	BEARING CONE	TIMKEN	20
1	55437	BEARING CUP	TIMKEN	19
1	49585	BEARING CONE	TIMKEN	18
1	49520	BEARING CUP	TIMKEN	17
2	9045 LJP	SEAL	J-M	16
4	DYN-2007-08	MOUNT PLUG		15
1	DYN-2005-94	COVER		14
1	DYN-2005-93	WASHER		13
1	DYN-2005-92	LOCKING KEY		12
1	DYN-2005-91	LOCKING WASHER		11
2	DYN-2005-90	JAMB NUT		10
1	DYN-2005-62	MOTOR ADAPTER		9
1	DYN-2005-52	BEARING SLEEVE		8
1	DYN-2005-42	MOTOR MOUNT SLEEVE		7
1	DYN-2005-33	BEARING MOUNT		6
1	DYN-2005-22	MOTOR MOUNT		5
1	414-2005-14	ACME SCREW		4
2	414-2007-05	GUIDE BAR		3
1	481-2005-12	BEARING END BRACKET		2
1	461-2005-11	MOTOR END BRACKET		1

QTY REQD	PART NUMBER	DESCRIPTION	MATERIAL SPECIFICATION	ITEM NO.
2		GREASE ZERK 1/4-28 UNF	STAINLESS STEEL	36
1		KEY 3/8 SQ. x 3 1/4 LG	STAINLESS STEEL	35
1		KEY 1/4 SQ. x 1 LG	STAINLESS STEEL	34

UNLESS OTHERWISE SPECIFIED:  
DIMENSIONS ARE IN INCHES.  
TOLERANCES ARE:  
FRACTIONS DECIMALS ANGLES  
± 1/16 .005 ±.02 ± 1/2°  
X.O.O ±.005

REMOVE BURRS, BREAK SHARP EDGES.  
MATERIAL: SEE PARTS LIST

FINISH: 125 ✓ APPROX WEIGHT, LBS: 600

DO NOT SCALE DRAWING

CUSTOMER P.O. No. DYNACON JOB No. 461

APPROVALS: DATE: 11/08/98

DATE: 11/08/98

THIS DRAWING IS THE PROPERTY OF **D** DYNACON, INC. ANY REPRODUCTION OR USE OF THIS DESIGN IS EXPRESSLY FORBIDDEN UNLESS AUTHORIZED IN WRITING.

LEVELWIND DRIVE ASSEMBLY

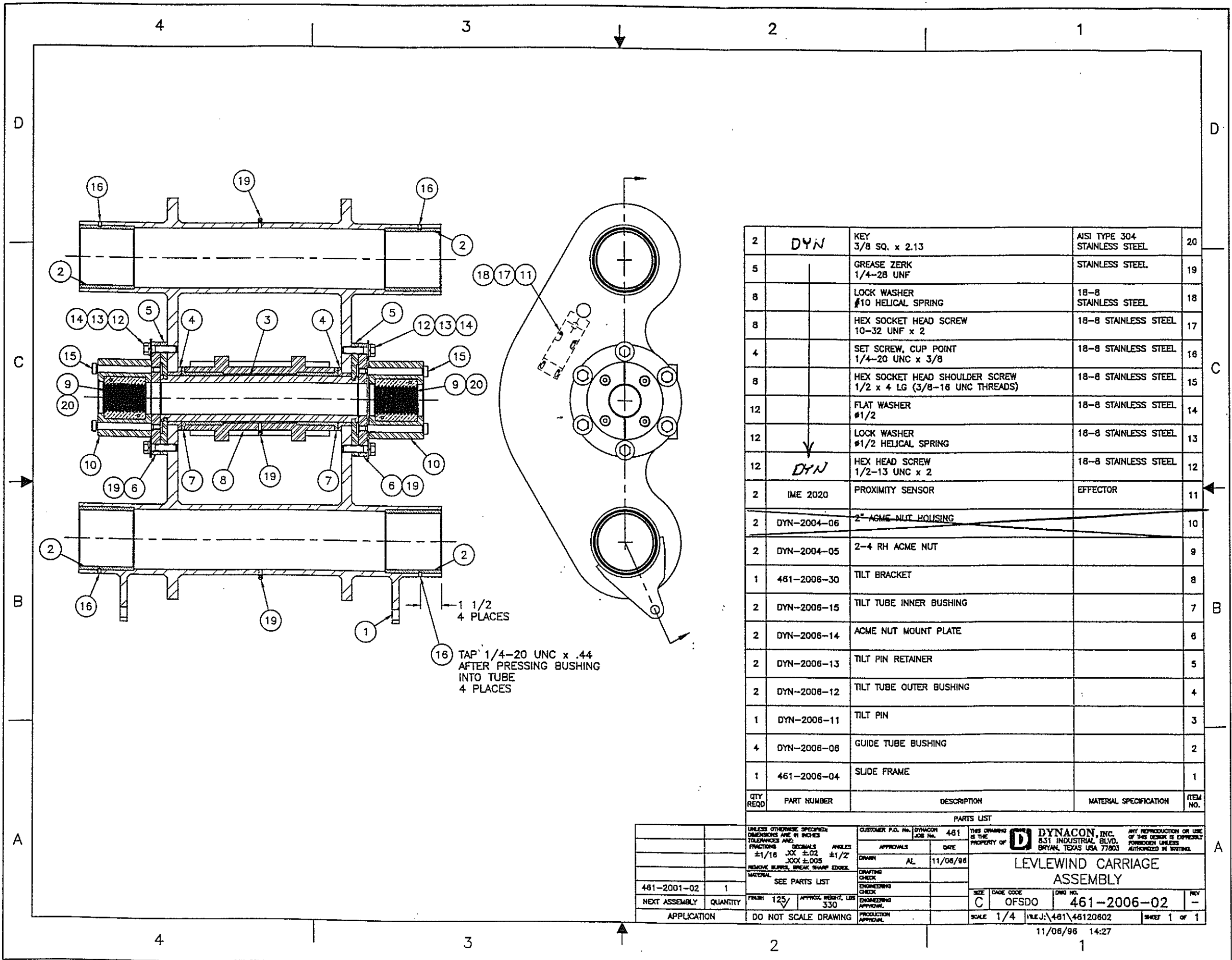
SIZE: D CASE CODE: OFSDO DWG NO.: 461-2005-02 REV: -

SCALE: 1/4 PATH J:\461\46120502 SHEET 1 OF 1

11/08/98 14:38

8 7 6 5 4 3 2 1





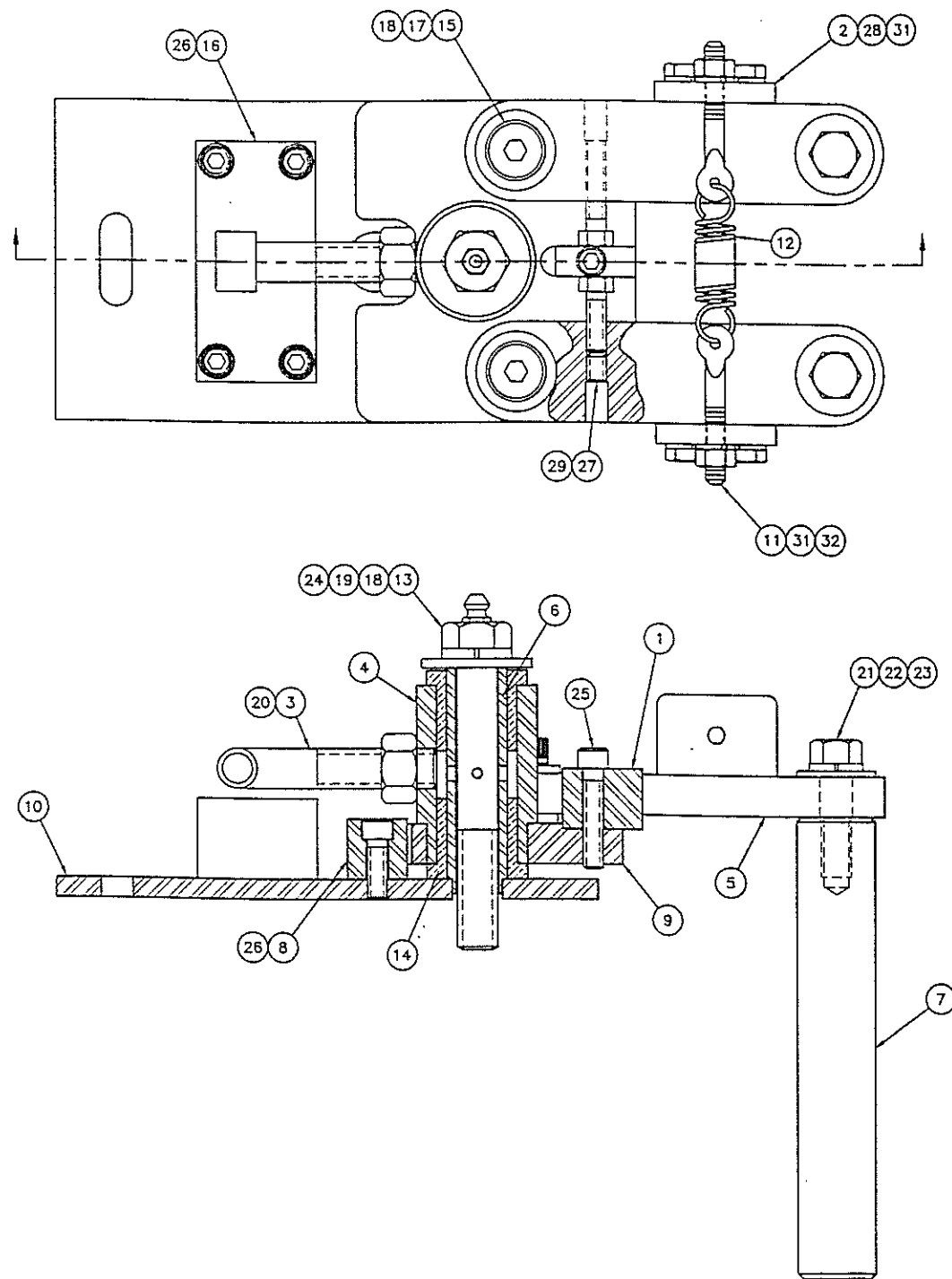
16 TAP 1/4-20 UNC x .44  
AFTER PRESSING BUSHING  
INTO TUBE  
4 PLACES

QTY REQD	PART NUMBER	DESCRIPTION	MATERIAL SPECIFICATION	ITEM NO.
2	DYN	KEY 3/8 SQ. x 2.13	AISI TYPE 304 STAINLESS STEEL	20
5		GREASE ZERK 1/4-28 UNF	STAINLESS STEEL	19
8		LOCK WASHER #10 HELICAL SPRING	18-8 STAINLESS STEEL	18
8		HEX SOCKET HEAD SCREW 10-32 UNF x 2	18-8 STAINLESS STEEL	17
4		SET SCREW, CUP POINT 1/4-20 UNC x 3/8	18-8 STAINLESS STEEL	16
8		HEX SOCKET HEAD SHOULDER SCREW 1/2 x 4 LG (3/8-16 UNC THREADS)	18-8 STAINLESS STEEL	15
12		FLAT WASHER #1/2	18-8 STAINLESS STEEL	14
12		LOCK WASHER #1/2 HELICAL SPRING	18-8 STAINLESS STEEL	13
12	DYN	HEX HEAD SCREW 1/2-13 UNC x 2	18-8 STAINLESS STEEL	12
2	IME 2020	PROXIMITY SENSOR	EFFECTOR	11
2	DYN-2004-06	2" ACME NUT HOUSING		10
2	DYN-2004-05	2-4 RH ACME NUT		9
1	461-2006-30	TILT BRACKET		8
2	DYN-2006-15	TILT TUBE INNER BUSHING		7
2	DYN-2006-14	ACME NUT MOUNT PLATE		6
2	DYN-2006-13	TILT PIN RETAINER		5
2	DYN-2006-12	TILT TUBE OUTER BUSHING		4
1	DYN-2006-11	TILT PIN		3
4	DYN-2006-08	GUIDE TUBE BUSHING		2
1	461-2006-04	SLIDE FRAME		1

UNLESS OTHERWISE SPECIFIED: DIMENSIONS ARE IN INCHES TOLERANCES ARE: FRACTIONS DECIMALS ANGLES ±1/16 .005 ±.02 ±1/2 .005 ±.005		CUSTOMER P.O. NO. DYNACON JOB NO. 461		THIS DRAWING IS THE PROPERTY OF DYNACON, INC.		ANY REPRODUCTION OR USE OF THIS DESIGN IS EXPRESSLY FORBIDDEN UNLESS AUTHORIZED IN WRITING.	
MATERIAL SEE PARTS LIST		DATE	11/06/98	DYNACON, INC. 831 INDUSTRIAL BLVD. BRYAN, TEXAS USA 77803		LEVLEWIND CARRIAGE ASSEMBLY	
461-2001-02	1	FINISH	125	APPROVAL WEIGHT, LBS	330	SIZE	C
NEXT ASSEMBLY	QUANTITY	SCALE	1/4	FILE J:	461\46120602	DWG NO.	461-2006-02
APPLICATION	DO NOT SCALE DRAWING	PRODUCTION APPROVAL		SCALE	1/4	REV	-

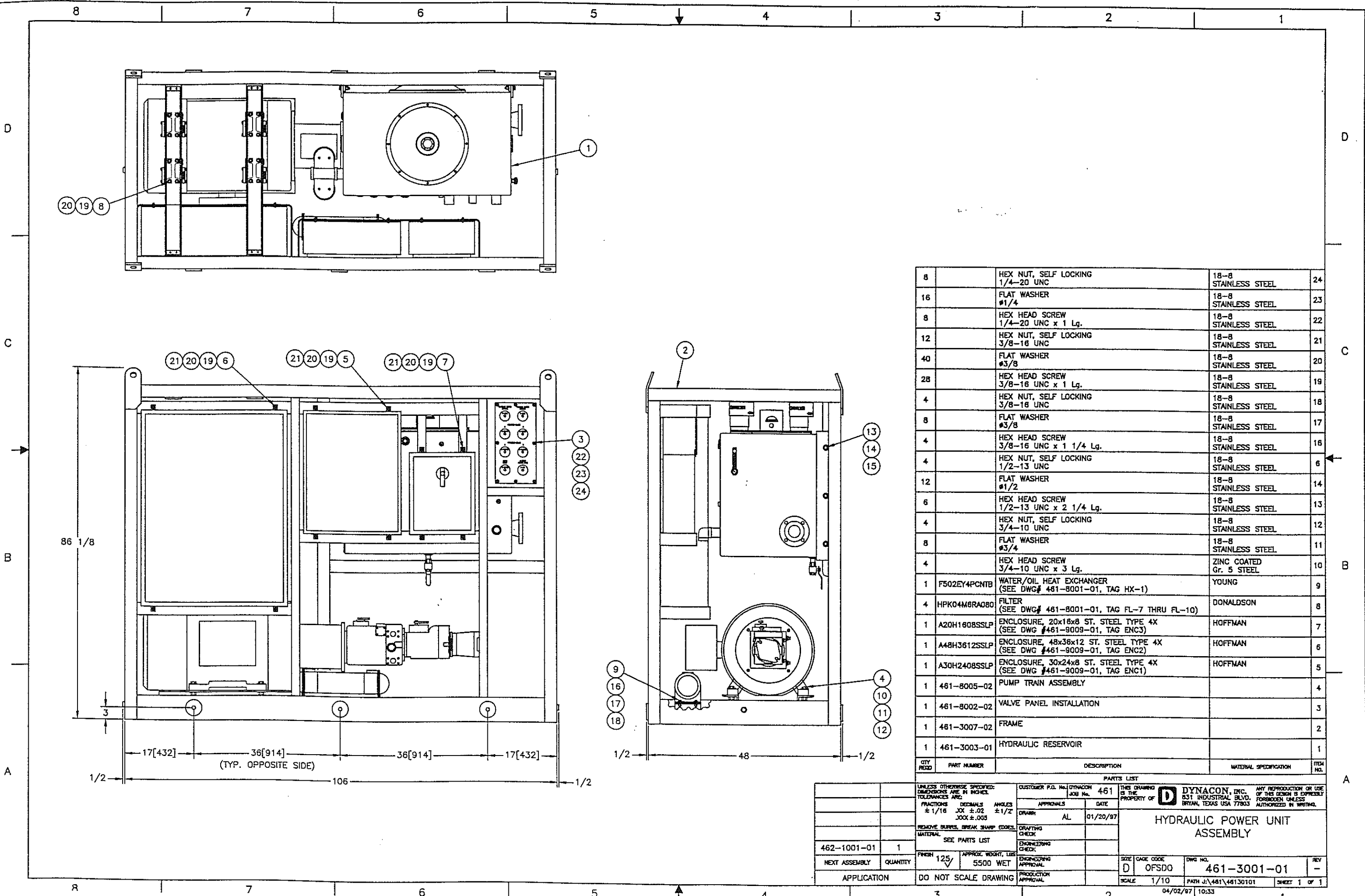
11/06/98 14:27

REVISIONS				
ZONE	REV	DESCRIPTION	DATE	APPROVED
B		UPDATED FORMAT	05/15/95	



QTY REQD	CAGE CODE	PART OR IDENTIFYING NO.	NOMENCLATURE OR DESCRIPTION	MATERIAL SPECIFICATION	ITEM NO.
2			HEX NUT 1/4-20 UNC	18-8 STAINLESS STEEL	32
8			LOCK WASHER #1/4	18-8 STAINLESS STEEL	31
4			FLAT WASHER #1/4	18-8 STAINLESS STEEL	30
2			SET SCREW, FLAT POINT 1/4-20 UNC x 3/8 LG	18-8 STAINLESS STEEL	29
4			HEX HEAD SCREW 1/4-20 x 3/4 LG	18-8 STAINLESS STEEL	28
2			HEX HEAD SCREW 1/4-20 x LENGTH VARIES	18-8 STAINLESS STEEL	27
5			HEX SOCKET HEAD SCREW 1/4-20 UNC x 3/4 LG	18-8 STAINLESS STEEL	26
1			HEX SOCKET HEAD SCREW 1/4-20 x 1 1/4 LG	18-8 STAINLESS STEEL	25
1			GREASE ZERK 1/4-28 UNF	STAINLESS STEEL	24
2			FLAT WASHER #3/8	18-8 STAINLESS STEEL	23
2			LOCK WASHER #3/8	18-8 STAINLESS STEEL	22
2			HEX HEAD SCREW 3/8-16 UNC x 1 1/4 LG	18-8 STAINLESS STEEL	21
1			HEX NUT 1/2-13 UNC	18-8 STAINLESS STEEL	20
1			LOCK WASHER #1/2	18-8 STAINLESS STEEL	19
3			FLAT WASHER #1/2	18-8 STAINLESS STEEL	18
2			HEX SOCKET HEAD SHOULDER SCREW 1/2-13 UNC x 3/4 LG	18-8 STAINLESS STEEL	17
1		DY97001-XXX-X	SENSOR		16
2		0812-12 FL1602	ARM BUSHING	MARTIN	15
2		1216-16 FL2003	BODY BUSHING	MARTIN	14
1		DYN-2008-17	PIVOT SCREW		13
1		DYN-2008-18	SPRING		12
2		DYN-2008-15	SPRING ANCHOR		11
1		DYN-2008-14	TIMING PLATE		10
1		DYN-2008-13	CAM PLATE		9
1		DYN-2008-12	STOP		8
2		DYN-2008-11	GUIDE FINGER		7
1		DYN-2008-10	PIVOT PIN		6
2		DYN-2008-09	SENSE ARM		5
1		DYN-2008-08	PIVOT BODY		4
1		DYN-2008-07	MAGNET MOUNT		3
2		DYN-2008-06	SPRING TAB		2
1		DYN-2008-05	ARM STOP		1

UNLESS OTHERWISE SPECIFIED: DIMENSIONS ARE IN INCHES. TOLERANCES ARE: FRACTIONS ± 1/16 DECIMALS .005 ANGLES ± 1/2° REMOVE BURRS, BREAK SHARP EDGES. MATERIAL: SEE PARTS LIST		CUSTOMER P.O. No. DYNACON JOB No. APPROVALS: DW DATE: 04/28/93	THIS DRAWING IS THE PROPERTY OF DYNACON, INC. ANY REPRODUCTION OR USE OF THIS DESIGN IS EXPRESSLY FORBIDDEN UNLESS AUTHORIZED IN WRITING. DYNACON, INC. 831 INDUSTRIAL BLVD. BRYAN, TEXAS USA 77803
NEXT ASSEMBLY	QUANTITY	FINISH 125	APPROX. WEIGHT, LBS 10
APPLICATION	DO NOT SCALE DRAWING	ENGINEERING APPROVAL	PRODUCTION APPROVAL
		SIZE D	CAGE CODE OFSDO
		DWG NO. DYN-2008-02	REV B
		SCALE 1/1	PATH 0:\DYN\DRW\200802
		DATE 05/15/95	TIME 14:13
		SHEET 1 OF 1	

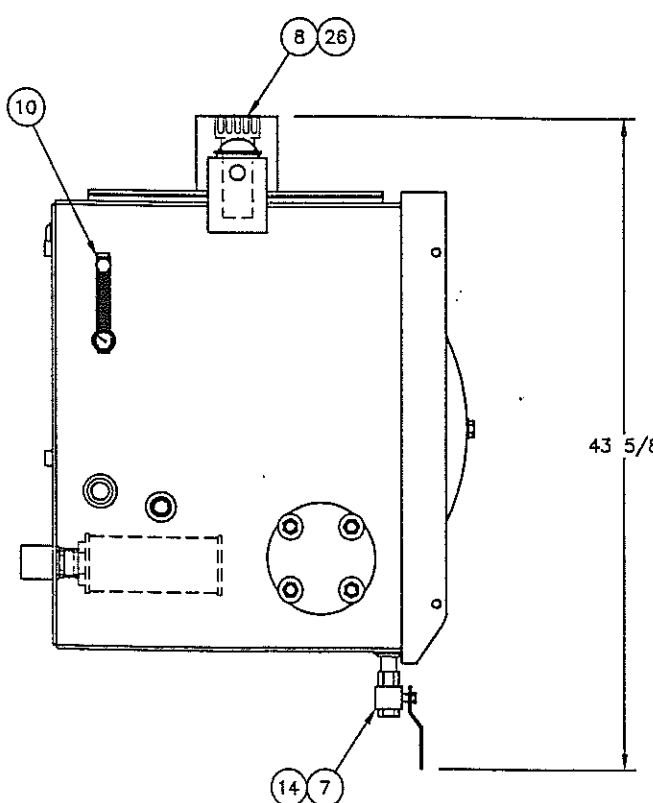
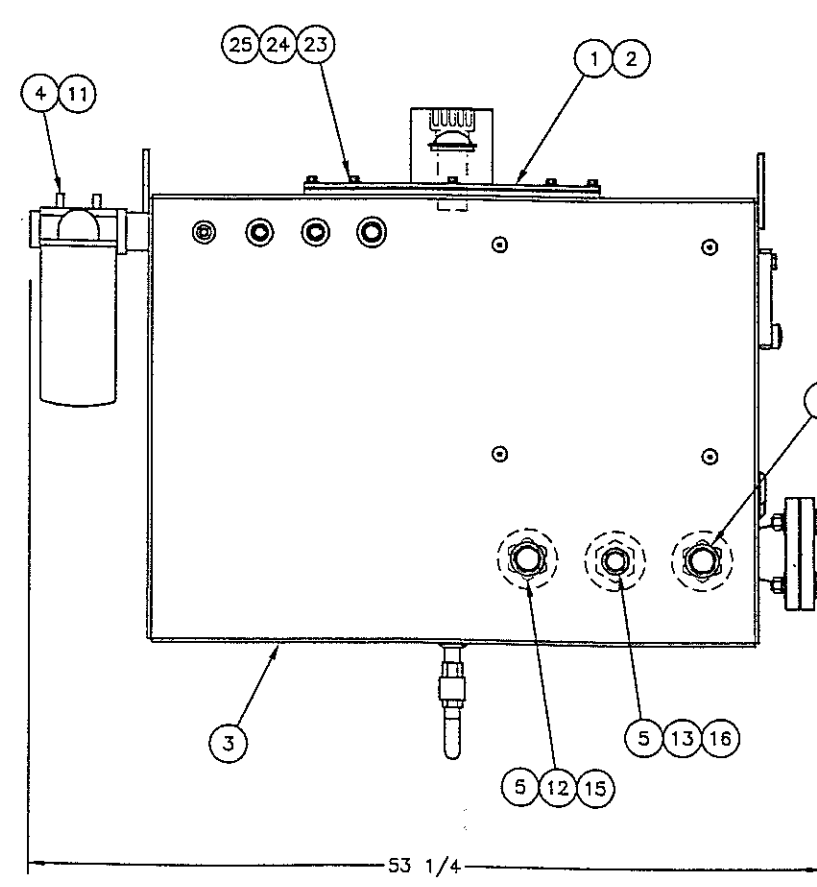
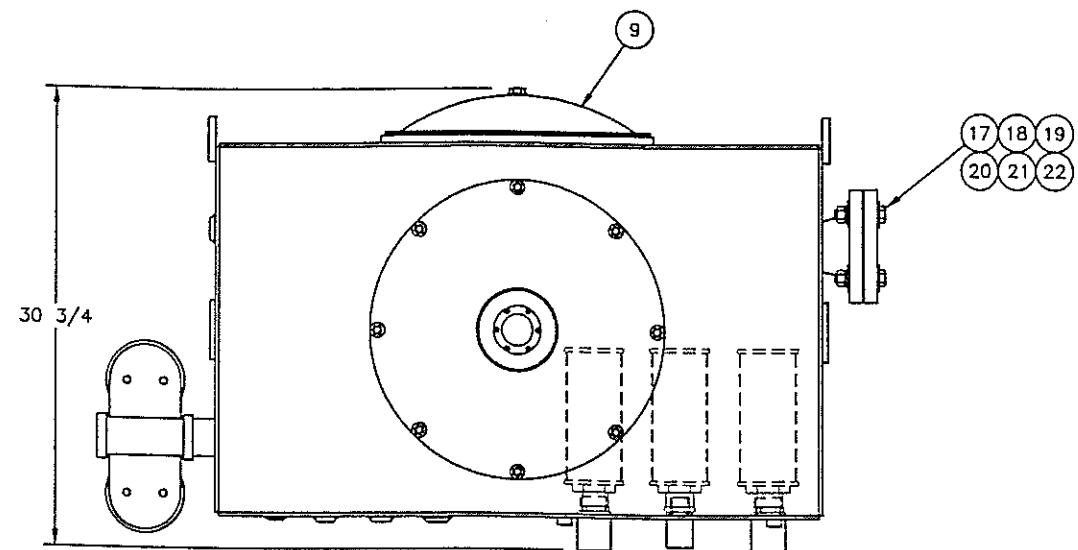


QTY	PART NUMBER	DESCRIPTION	MATERIAL SPECIFICATION	ITEM NO.
8		HEX NUT, SELF LOCKING 1/4-20 UNC	18-8 STAINLESS STEEL	24
16		FLAT WASHER #1/4	18-8 STAINLESS STEEL	23
8		HEX HEAD SCREW 1/4-20 UNC x 1 Lg.	18-8 STAINLESS STEEL	22
12		HEX NUT, SELF LOCKING 3/8-18 UNC	18-8 STAINLESS STEEL	21
40		FLAT WASHER #3/8	18-8 STAINLESS STEEL	20
28		HEX HEAD SCREW 3/8-18 UNC x 1 Lg.	18-8 STAINLESS STEEL	19
4		HEX NUT, SELF LOCKING 3/8-18 UNC	18-8 STAINLESS STEEL	18
8		FLAT WASHER #3/8	18-8 STAINLESS STEEL	17
4		HEX HEAD SCREW 3/8-18 UNC x 1 1/4 Lg.	18-8 STAINLESS STEEL	16
4		HEX NUT, SELF LOCKING 1/2-13 UNC	18-8 STAINLESS STEEL	6
12		FLAT WASHER #1/2	18-8 STAINLESS STEEL	14
6		HEX HEAD SCREW 1/2-13 UNC x 2 1/4 Lg.	18-8 STAINLESS STEEL	13
4		HEX NUT, SELF LOCKING 3/4-10 UNC	18-8 STAINLESS STEEL	12
8		FLAT WASHER #3/4	18-8 STAINLESS STEEL	11
4		HEX HEAD SCREW 3/4-10 UNC x 3 Lg.	ZINC COATED Gr. 5 STEEL	10
1	F502EY4PCNTB	WATER/OIL HEAT EXCHANGER (SEE DWG# 461-8001-01, TAG HX-1)	YOUNG	9
4	HPK04M8RA080	FILTER (SEE DWG# 461-8001-01, TAG FL-7 THRU FL-10)	DONALDSON	8
1	A20H1608SSLP	ENCLOSURE, 20x18x8 ST. STEEL TYPE 4X (SEE DWG #461-9009-01, TAG ENC3)	HOFFMAN	7
1	A48H3612SSLP	ENCLOSURE, 48x36x12 ST. STEEL TYPE 4X (SEE DWG #461-9009-01, TAG ENC2)	HOFFMAN	6
1	A30H2408SSLP	ENCLOSURE, 30x24x8 ST. STEEL TYPE 4X (SEE DWG #461-9009-01, TAG ENC1)	HOFFMAN	5
1	461-8005-02	PUMP TRAIN ASSEMBLY		4
1	461-8002-02	VALVE PANEL INSTALLATION		3
1	461-3007-02	FRAME		2
1	461-3003-01	HYDRAULIC RESERVOIR		1

UNLESS OTHERWISE SPECIFIED: DIMENSIONS ARE IN INCHES TOLERANCES ARE: FRACTIONS DECIMALS ANGLES ± 1/16 .001 ± 1/2 ± 1/2		CUSTOMER P.O. NO. DYNACON JOB No. 461		THIS DRAWING IS THE PROPERTY OF DYNACON, INC. 831 INDUSTRIAL BLVD. BRYAN, TEXAS USA 77803 ANY REPRODUCTION OR USE HEREOF IS EXPRESSLY FORBIDDEN UNLESS AUTHORIZED IN WRITING.	
APPROVALS		DATE		DATE	
DRAWN AL		01/20/97			
REMOVE BURRS, BREAK SHARP EDGES. MATERIAL		DRAFTING CHECK			
SEE PARTS LIST		ENGINEERING CHECK			
462-1001-01	1	FINISH 125	APPROX. WEIGHT, LBS 5500 WET	SIZE CODE D	CAE CODE OFSDO
NEXT ASSEMBLY QUANTITY		APPLICATION		DWG NO. 461-3001-01	REV -
DO NOT SCALE DRAWING		SCALE 1/10		SHEET 1 OF 1	

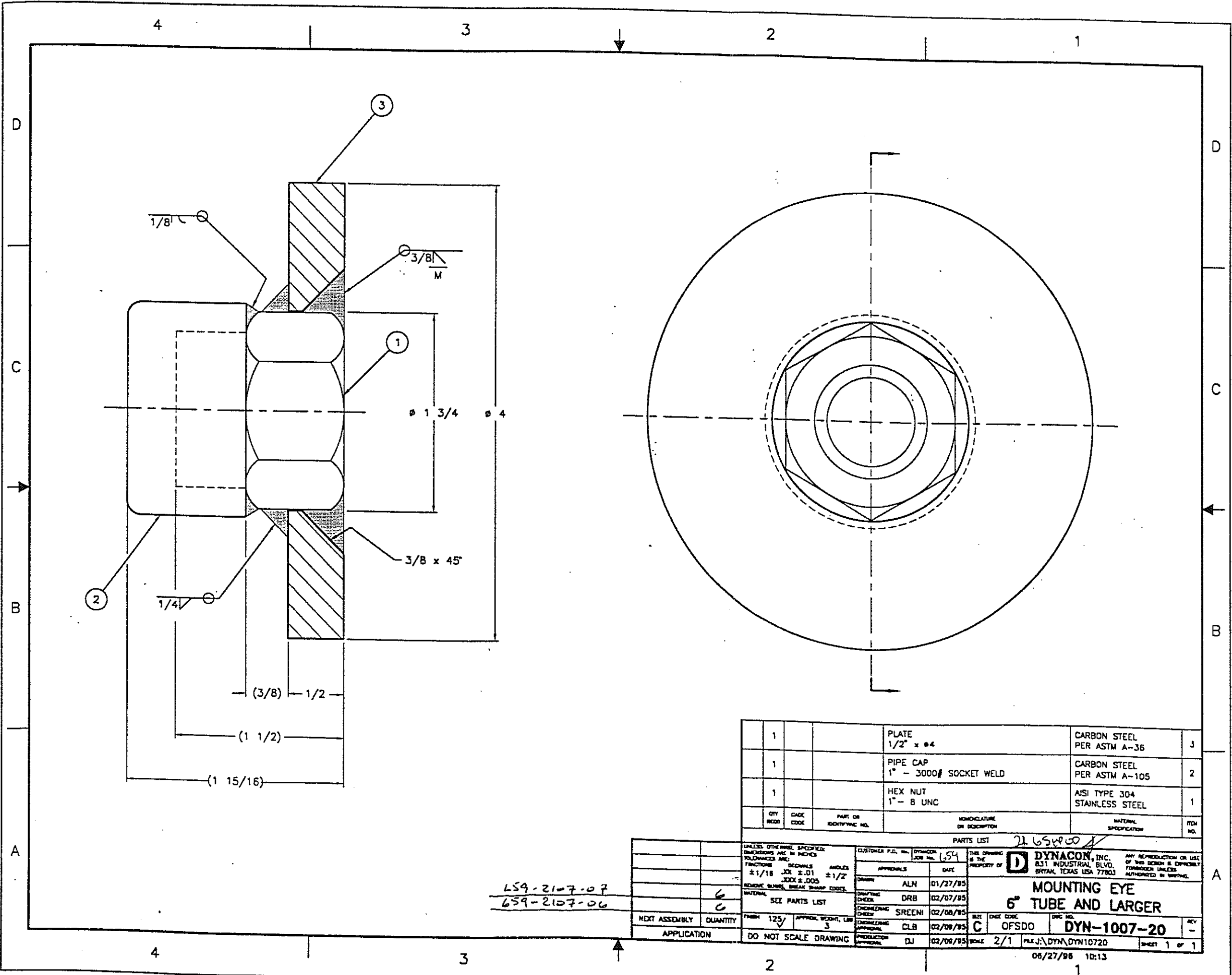
04/02/97 10:33

REVISIONS				
ZONE	REV	DESCRIPTION	DATE	APPROVED
-	A	ITEM 4 PART NUMBER WAS ZDF2215-5100	01/20/97	



QTY REQD	PART NUMBER	DESCRIPTION	MATERIAL SPECIFICATION	ITEM NO.
6		ROUND HEAD SCREW, SLOTTED #10-24 UNC x 3/4 Lg.	18-8 STAINLESS STEEL	26
8		FLAT WASHER #3/8	18-8 STAINLESS STEEL	25
8		LOCK WASHER #3/8, HELICAL SPRING	18-8 STAINLESS STEEL	24
8		HEX HEAD SCREW 3/8-16 UNC x 3/4 Lg.	18-8 STAINLESS STEEL	23
8		FLAT WASHER #5/8	18-8 STAINLESS STEEL	22
4		LOCK WASHER, #5/8, HELICAL SPRING	18-8 STAINLESS STEEL	21
4		HEX NUT, PLAIN 5/8-11 UNC	ZINC COATED Gr. 5 STEEL	20
4		HEX HEAD SCREW 5/8-11 UNC x 3 Lg.	ZIN COATED Gr. 5 STEEL	19
1		FLANGE GASKET 3"-150# RF	1/16 BUNA-N 60 DUROMETER	18
1		BLIND FLANGE, 3"	CARBON STEEL PER ASTM A-105	17
1		HEX BUSHING, 1 MALE x 1 1/2 FEMALE	CARBON STEEL PER ASTM A-105	16
2		HEX BUSHING, 1 1/4 MALE x 1 1/2 FEMALE	CARBON STEEL PER ASTM A-105	15
1		CLOSE NIPPLE, 3/4" NPT	CARBON STEEL PER ASTM A-105	14
1		CLOSE NIPPLE, 1" NPT	CARBON STEEL PER ASTM A-105	13
2		CLOSE NIPPLE, 1 1/4" NPT	CARBON STEEL PER ASTM A-105	12
1		CLOSE NIPPLE, 1 1/2" NPT	CARBON STEEL PER ASTM A-105	11
1	G615-05-A-1	LEVEL GAUGE (SEE DRAWING #461-8001-01, TAG LG-1)	LUBE DEVICES	10
1	HC-CE-18	CLEANOUT COVER W/ ADAPTER #HC-BA-10 (SEE DRAWING #461-8001-01, TAG CC-2)	HYDROCRAFT	9
1	AB-10103	FILLER CAP / BREATHER (SEE DRAWING #461-8001-01, TAG FB-1)	FLOW EZY	8
1	580-70	BALL VALVE (SEE DRAWING #461-8001-01 TAG BV-1)	NIBCO	7
1	50-1 1/2-100	STRAINER (SEE DRAWING #461-8001-01 TAG ST-3)	FLOW EZY	6
2	50-1 1/2-200	STRAINER (SEE DRAWING #461-8001-01 TAG ST-1 AND ST-2)	FLOW EZY	5
1	ZDF221505500	FILTER (SEE DRAWING #461-8001-01 TAG FL-2)	ZINGA	4
1	461-3003-02	RESERVOIR SHELL		3
1	428-3103-06	COVER GASKET		2
1	428-3103-05	CLEANOUT COVER (SEE DRAWING #461-8001-01 TAG CC-1)		1

PARTS LIST		CUSTOMER P.O. No. DYNACON JOB No. 461		THIS DRAWING IS THE PROPERTY OF DYNACON, INC. ANY REPRODUCTION OR USE OF THIS DESIGN IS EXPRESSLY FORBIDDEN UNLESS AUTHORIZED IN WRITING.		
UNLESS OTHERWISE SPECIFIED: DIMENSIONS ARE IN INCHES. FRACTIONS DECIMALS ANGLES ± 1/16 JXX ± .02 ± 1/2 JXXX ± .005	APPROVALS	DATE	<b>D</b> DYNACON, INC. 531 INDUSTRIAL BLVD. BRYAN, TEXAS USA 77803			
REMOVE BURRS, BREAK SHARP EDGES. MATERIAL SEE PARTS LIST	DRAWN	AL				12/17/96
FINISH 125/	DRAFTING CHECK	JLL				12/30/96
APPROX. WEIGHT, LBS 640	ENGINEERING CHECK	WHB				12/30/96
NEXT ASSEMBLY QUANTITY	ENGINEERING APPROVAL	JED	01/02/97	SIZE D	CAGE CODE OFSDO	
APPLICATION DO NOT SCALE DRAWING	PRODUCTION APPROVAL	JRJ	12/31/96	DWG NO. 461-3003-01	REV A	
				SCALE 1/8	01/20/97 09:09	



QTY	DATE	PART OR IDENTIFYING NO.	DESCRIPTION	MATERIAL SPECIFICATION	ITEM NO.
1			PLATE 1/2" x 94	CARBON STEEL PER ASTM A-36	3
1			PIPE CAP 1" - 3000# SOCKET WELD	CARBON STEEL PER ASTM A-105	2
1			HEX NUT 1" - 8 UNC	AISI TYPE 304 STAINLESS STEEL	1

LS9-2107-07  
659-2107-06

UNLESS OTHERWISE SPECIFIED DIMENSIONS ARE IN INCHES TOLERANCES ARE:		CUSTOMER P.O. NO. / DYNACON JOB NO. 154		THIS DRAWING IS THE PROPERTY OF DYNACON, INC. ANY REPRODUCTION OR USE OF THIS DRAWING IS EXPRESSLY FORBIDDEN UNLESS AUTHORIZED IN WRITING.	
FRACTIONS	DECIMALS	ANGLES	APPROVALS	DATE	
±1/16	.001	±1/2°	DRB	01/27/85	
.0005	.0005		DRB	02/07/85	
REMOVE BURRS, BREAK SHARP EDGES.			GREEN	02/08/85	
MATERIAL	SEE PARTS LIST		CLB	02/08/85	
FINISH	125	APPROVAL WEIGHT, LBS	DJ	02/08/85	
		3			
NEXT ASSEMBLY	QUANTITY	SCALE	2/1	FILE NO.	DYN-DYN10720
APPLICATION	DO NOT SCALE DRAWING	SCALE	2/1	FILE NO.	DYN-DYN10720

**MOUNTING EYE**  
**6" TUBE AND LARGER**  
**DYN-1007-20**