

SPECIFICATIONS

BARE DRUM PULL: 10000 LB @ 92 FPM [4500 KG @ 28 M/MIN]
 FULL DRUM PULL: 3950 LB @ 232 FPM [1700 KG @ 74 M/MIN]
 DRUM CAPACITY: 2400 METERS, 1" CABLE

ALLOWABLE WIRE DIAMETERS: 1/4" TO 1/2"

ESTIMATED WEIGHT: 9000 LB ± 5%

ESTIMATED WEIGHT WITHOUT CENTER FLANGE: 8600 LB ± 5%

NOTE: WEIGHTS DO NOT INCLUDE CABLE OR WIRE

POWER SUPPLY: 480VAC/3PH/60HZ

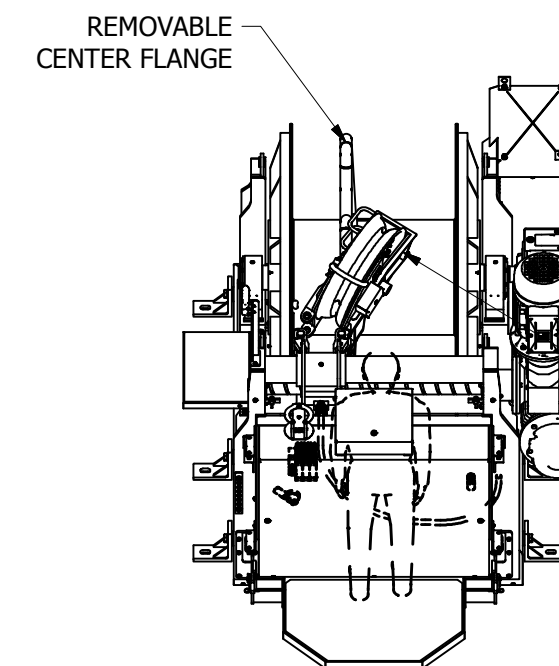
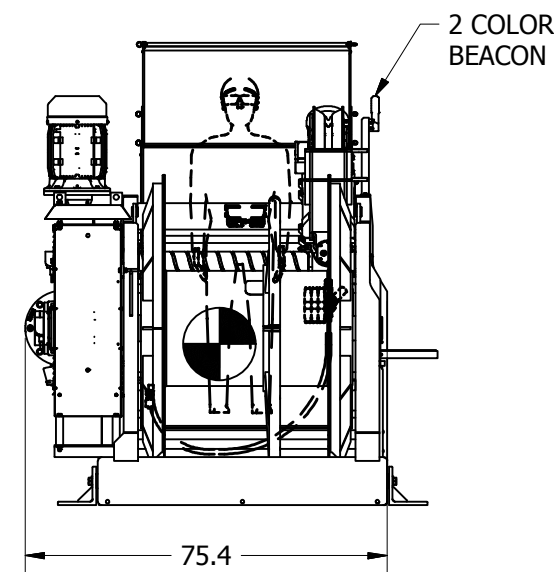
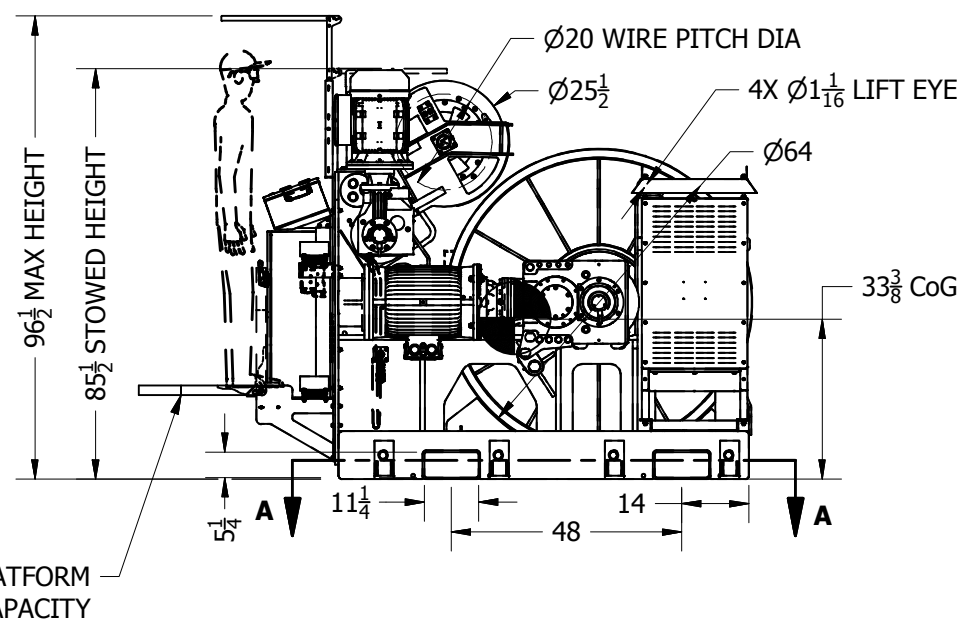
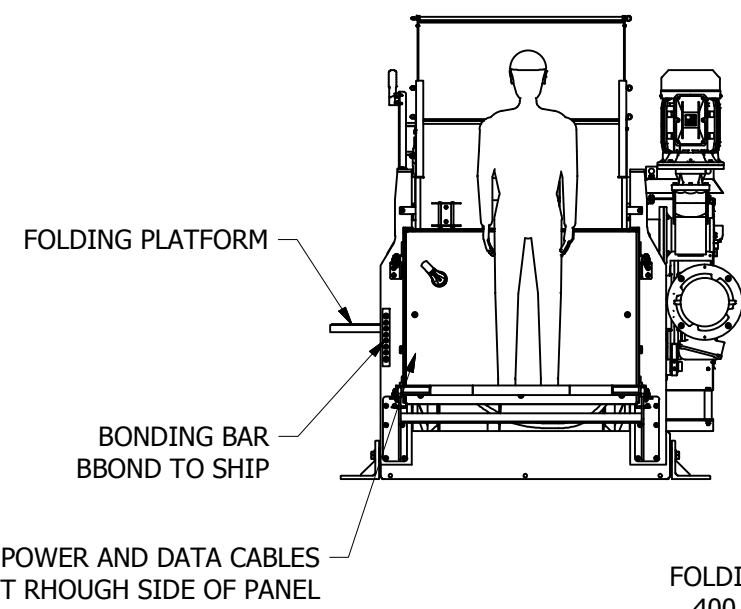
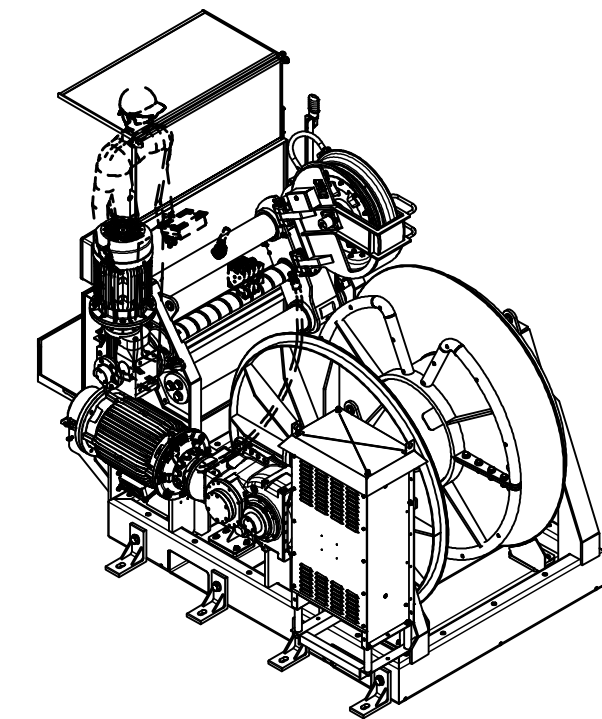
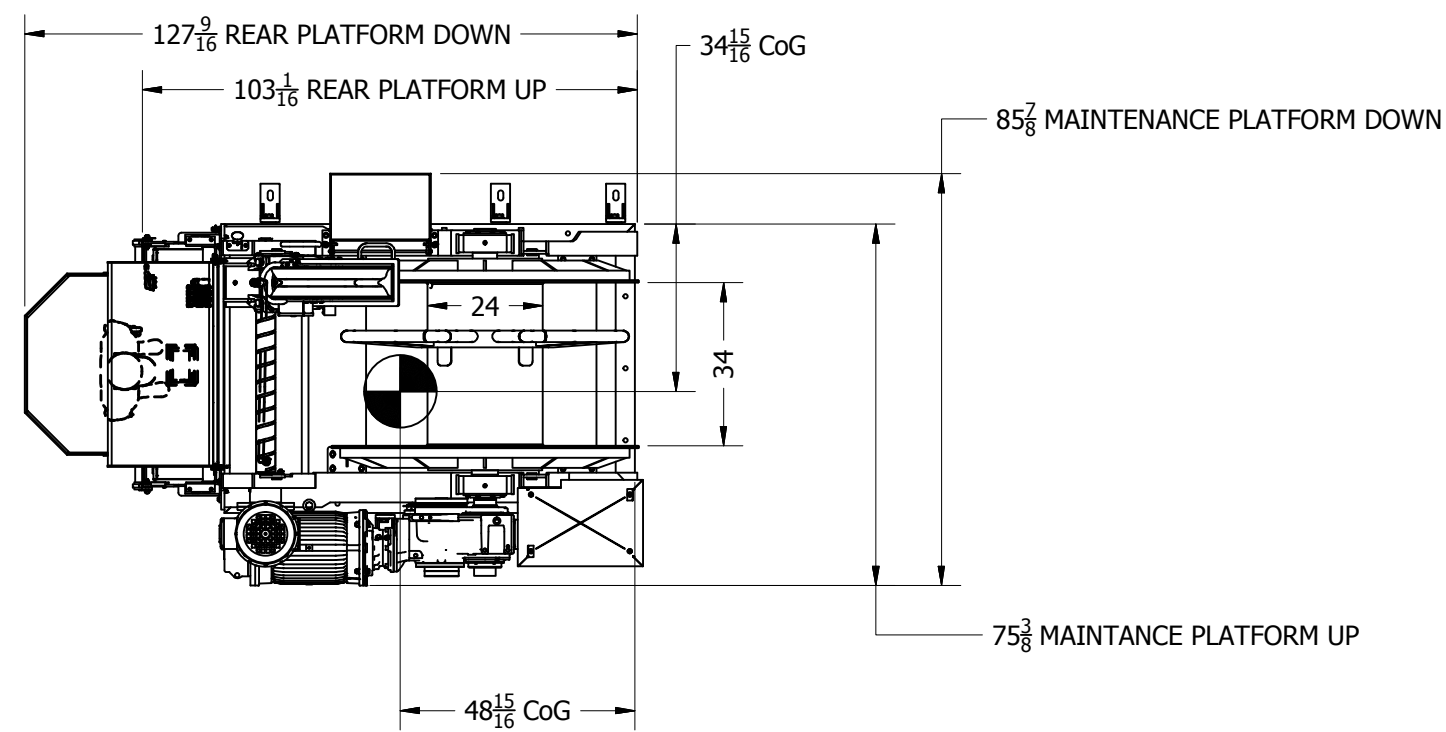
DRUM MOTOR: 40 HP

LEVELWIND MOTOR: 15 HP

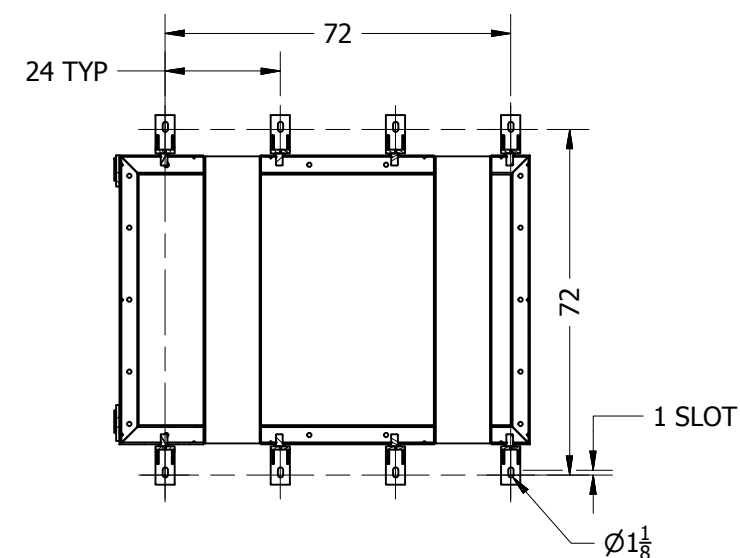
LEVELWIND SPEED: 4.5-5 SEC FLANGE TO FLANGE

NOTE:

- DRUM CAPACITY AS 1" WIRE ONLY AS A COMPARATIVE SPECIFICATION. WINCH IS NOT DESIGNED TO BE USED WITH 1" WIRE.



LEVELWIND OPEN FOR CABLE REMOVAL.
 TILTS TO A 30° ANGLE TO PROVIDE 2" CLEARANCE TO REMOVE CABLE FROM SHEAVE.
 TO OPEN:
 - REMOVE 2X PINS
 - PUSH ON HANDLES
 - REQUIRES APPROX. 25 LB FORCE TO OPEN

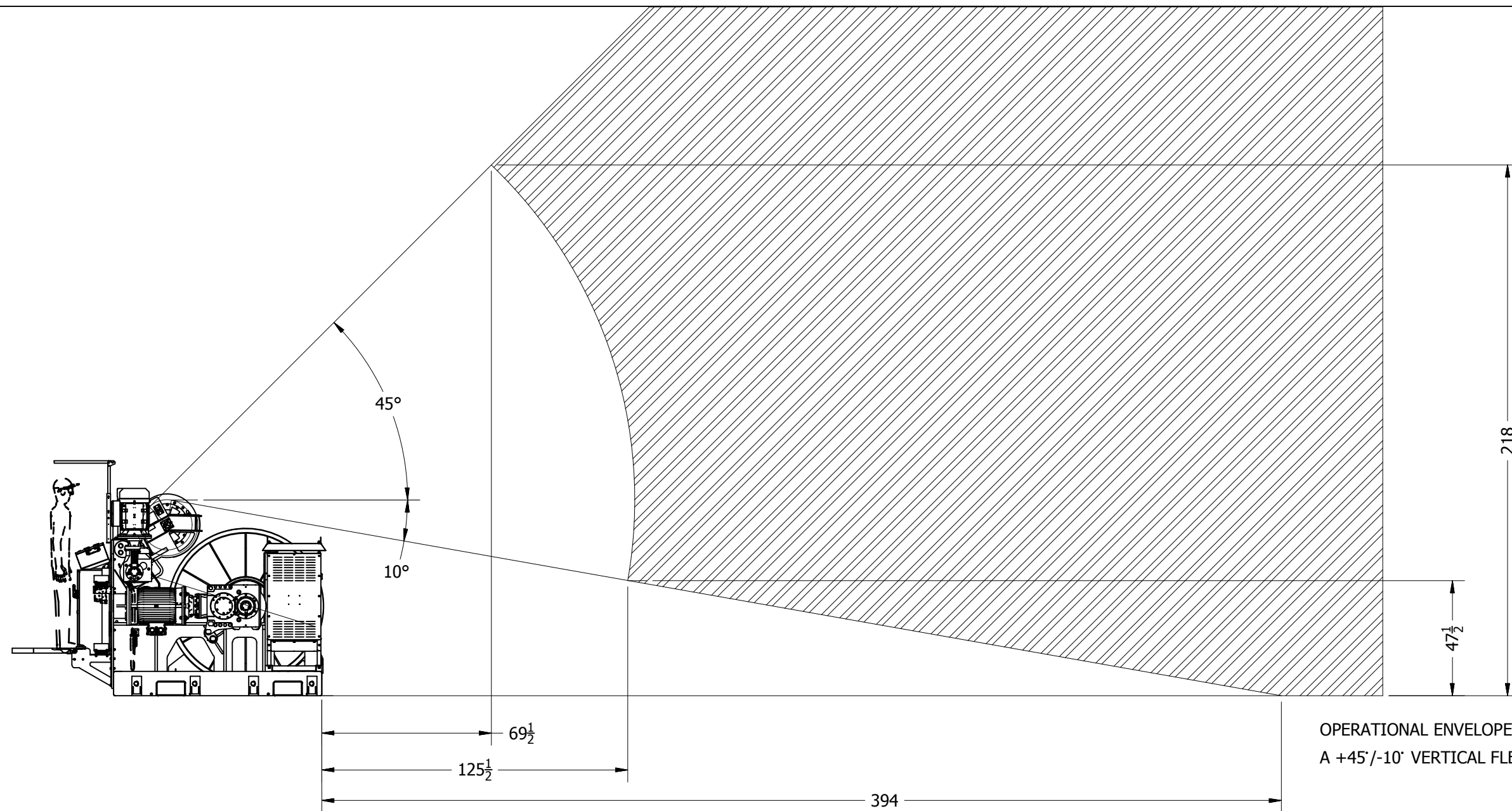


**SECTION A-A
 FOOTPRINT
 SCALE 1 / 40**

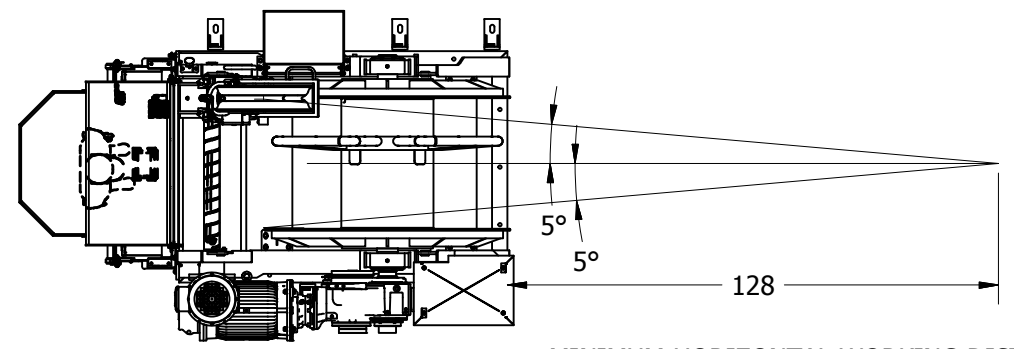
B	29-Feb-20	4435	AS-BUILT UPDATE	DHM	DHM
A	05-Jun-19		ADDED MOUNTING DIMENSIONS	NSW	DHM
REV	DATE	ECN	AMENDMENTS	BY	APPD

This print is the property of Hawboldt Industries Inc. It is loaned with the express agreement that the drawing and the information contained therein are the property of Hawboldt Industries Inc. and will not be reproduced, copied or otherwise disposed of directly or indirectly, and will not be used in whole or in part to assist in making or to furnish any information for making drawings, prints or other reproductions thereof, or for the making of apparatus or parts thereof except upon written permission of Hawboldt Industries Inc. The acceptance of the print will be construed as an acceptance of the foregoing agreement.

STANDARD TOLERANCE UNLESS OTHERWISE SPECIFIED			HAWBOLDT INDUSTRIES (1989) LIMITED P.O. Box 80, Chester, Nova Scotia, Canada, B0J 1J0 Tel: (902) 275-3591 Fax: (902) 275-5014 www.hawboldt.ca		
ALL DIMENSIONS ARE IN INCHES DIMENSIONS IN [] ARE IN MM					
WHOLE NUMBER ± 1/16	2 PLC. DECIMAL ± .01	MATL CERT	TITLE SPRE-3464 GENERAL ARRANGEMENT		
FRACTIONAL ± 1/16	3 PLC. DECIMAL ± .005	MATL TEST	NEXT ASSEMBLY F400942 DERIVED FROM SHEET 1 OF 2		
ANGLES ± 1/2°	4 PLC. DECIMAL ± .0005	WELD TEST	FIRST USED ON WO 1942		
BREAK ALL SHARP CORNERS AND EDGES			EST LBS	CHECKED	APPROVED
FINISH ON MACHINED SURFACES	125	ACT LBS	NSW	DHM	NSW
			DATE 11-Oct-19	SCALE 1 / 40	REV 34-00304-000 B



OPERATIONAL ENVELOPE BASED OFF OF
A +45°/-10° VERTICAL FLEET ANGLE



MINIMUM HORIZONTAL WORKING DISTANCE
AT 5° FLEET ANGLE

This print is the property of Hawboldt Industries Inc. It is loaned with the express agreement that the drawing and the information contained therein are the property of Hawboldt Industries Inc. and will not be reproduced, copied or otherwise disposed of directly or indirectly, and will not be used in whole or in part to assist in making or to furnish any information for making drawings, prints or other reproductions thereof, or for the making of apparatus or parts thereof except upon written permission of Hawboldt Industries Inc. The acceptance of the print will be construed as an acceptance of the foregoing agreement.

STANDARD TOLERANCE UNLESS OTHERWISE SPECIFIED				HAWBOLDT INDUSTRIES (1989) LIMITED P.O. Box 80, Chester, Nova Scotia, Canada, B0J 1J0 Tel: (902) 275-3591 Fax: (902) 275-5014 www.hawboldt.ca	
ALL DIMENSIONS ARE IN INCHES DIMENSIONS IN [] ARE IN MM				TITLE SPRE-3464 GENERAL ARRANGEMENT	
WHOLE NUMBER ± 1/16	2 PLC. DECIMAL ± .01	MATL CERT	NEXT ASSEMBLY F400942		
FRACTIONAL ± 1/16	3 PLC. DECIMAL ± .005	MATL TEST	FIRST USED ON WO 1942		DERIVED FROM
ANGLES ± 1/2°	4 PLC. DECIMAL ± .0005	WELD TEST	SHEET 2 OF 2		REV
BREAK ALL SHARP CORNERS AND EDGES		EST LBS	DRAWN NSW	CHECKED DHM	APPROVED NSW
FINISH ON MACHINED SURFACES	125	ACT LBS	DATE 11-Oct-19	SCALE 1 / 50	34-00304-000